

# Appendix I

## Alabama Counties

<b>County</b>	<b>Date Organized</b>	<b>County Seat</b>	<b>Origin of the Name</b>
<b>Autauga</b>	<b>November 30, 1818</b>	<b>Prattville</b>	<b>Alibamo Indian village, Atagi, meaning “border”</b>
<b>Baine</b>	<b>December 7, 1866</b>		<b>General David W. Baine, C.S.A. (original name of Etowah County)</b>
<b>Baker</b>	<b>December 30, 1868</b>		<b>Alfred Baker, a local citizen (original name for Chilton County)</b>
<b>Baldwin</b>	<b>December 21, 1809</b>	<b>Bay Minette</b>	<b>Abraham Baldwin, a Georgia statesman</b>
<b>Barbour</b>	<b>December 18, 1832</b>	<b>Clayton</b>	<b>Governor James Barbour of Virginia</b>
<b>Benton</b>	<b>December 18, 1832</b>		<b>Senator Thomas Hart Benton of Missouri (original name of Calhoun County)</b>
<b>Bibb</b>	<b>February 7, 1818</b>	<b>Centreville</b>	<b>Governor William Wyatt Bibb of Alabama</b>
<b>Blount</b>	<b>February 7, 1818</b>	<b>Oneonta</b>	<b>Governor Willie G. Blount of Tennessee</b>
<b>Bullock</b>	<b>December 5, 1866</b>	<b>Union Springs</b>	<b>Colonel Edward C. Bullock, C.S.A., of Alabama</b>
<b>Butler</b>	<b>December 13, 1819</b>	<b>Greenville</b>	<b>Captain William Butler of Alabama</b>
<b>Cahawba</b>	<b>February 7, 1818</b>		<b>Cahawba (Cahaba) River (original name of Bibb County)</b>
<b>Calhoun</b>	<b>December 18, 1832</b>	<b>Anniston</b>	<b>John C. Calhoun of South Carolina</b>
<b>Chambers</b>	<b>December 18, 1832</b>	<b>Lafayette</b>	<b>Senator Henry Chambers of Alabama</b>
<b>Cherokee</b>	<b>January 9, 1836</b>	<b>Centre</b>	<b>The Cherokee Indian tribe</b>
<b>Chilton</b>	<b>December 30, 1868</b>	<b>Clanton</b>	<b>Chief Justice William P. Chilton of the Alabama Supreme Court</b>

<b>County</b>	<b>Date Organized</b>	<b>County Seat</b>	<b>Origin of the Name</b>
Choctaw	December 29, 1847	Butler	The Choctaw Indian tribe
Clarke	December 10, 1812	Grove Hill	General John Clarke of Georgia
Clay	December 7, 1866	Ashland	Senator Henry Clay of Kentucky
Cleburne	December 6, 1866	Heflin	General Patrick R. Cleburne, C.S.A.
Coffee	December 29, 1841	Elba, Enterprise	General John Coffee of Creek War fame
Colbert	February 6, 1867	Tuscumbia	George and Levi Colbert, Chickasaw Indian chiefs
Conecuh	February 13, 1818	Evergreen	Conecuh River or the Indian word meaning <i>Aland of the cane</i> @
Coosa	December 18, 1832	Rockford	Coosa River or the Indian word meaning “canebreak”
Cotaco	February 8, 1818		Named for a creek (original name of Morgan County)
Covington	December 18, 1821	Andalusia	General Leonard W. Covington of Maryland
Crenshaw	November 24, 1866	Luverne	Anderson Crenshaw of Alabama
Cullman	January 24, 1877	Cullman	Colonel Johann G. Cullman, the founder of a colony of Germans there
Dale	December 22, 1824	Dale	Samuel Dale, the “Daniel Boone” of Alabama
Dallas	February 9, 1818	Selma	Alexander J. Dallas, the Secretary of the United States Treasury
Decatur	December 21, 1821		Commodore Stephen Decatur of the United States Navy (this county was abolished in 1824)
DeKalb	January 9, 1835	Fort Payne	General John Baron DeKalb of the American Revolution
Elmore	February 15, 1866	Wetumpka	General John A. Elmore of the American Revolution (Elmore settled in Alabama)
Escambia	December 10, 1868	Brewton	Escambia River of the Indian word meaning “cane therein”
Etowah	December 7, 1866	Gadsden	Indian word meaning “well bearing tree”

<b>County</b>	<b>Date Organized</b>	<b>County Seat</b>	<b>Origin of the Name</b>
Fayette	December 20, 1824	Fayette	Marquis de Lafayette of Revolutionary War fame
Franklin	February 4, 1818	Russellville	Benjamin Franklin of Pennsylvania
Geneva	December 26, 1868	Geneva	The city in Switzerland
Greene	December 13, 1819	Eutaw	General Nathaniel Greene of Revolutionary War fame
Hale	January 30, 1867	Greensboro	Lieutenant Colonel Stephen F. Hale, C.S.A., of Alabama
Hancock	February 12, 1850		Governor John Hancock of Massachusetts (original name of Winston County)
Henry	December 13, 1819	Abbeville	Patrick Henry of Virginia
Houston	February 9, 1903	Dothan	Governor George S. Houston of Alabama
Jackson	December 13, 1819	Scottsboro	General Andrew Jackson of Tennessee
Jefferson	December 13, 1819	Birmingham	President Thomas Jefferson
Jones	February 4, 1867		E. P. Jones of Alabama (original name of Lamar County)
Lamar	February 4, 1867	Vernon	L. Q. C. Lamar, congressman from Mississippi
Lauderdale	February 6, 1818	Florence	Colonel James Lauderdale of Tennessee
Lawrence	February 4, 1818	Moulton	Captain James Lawrence of the United States Navy
Lee	December 15, 1866	Opelika	General Robert E. Lee
Limestone	February 6, 1818	Athens	A local creek
Lowndes	January 20, 1830	Hayneville	William Lowndes, congressman from South Carolina
Macon	December 18, 1832	Tuskegee	Senator Nathaniel Macon of North Carolina
Madison	December 13, 1808	Huntsville	President James Madison
Marengo	February 7, 1818	Linden	One of Napoleon's victories
Marion	December 13, 1818	Hamilton	General Francis Marion, the "Swamp Fox" of the American Revolution

<b>County</b>	<b>Date Organized</b>	<b>County Seat</b>	<b>Origin of the Name</b>
Marshall	January 9, 1836	Guntersville	Chief Justice John Marshall of the United States Supreme Court
Mobile	August 1, 1812	Mobile	Local Indian Tribe
Monroe	June 22, 1815	Monroeville	President James Monroe
Montgomery	December 6, 1816	Montgomery	Major Lemuel P. Montgomery of Tennessee
Morgan	February 8, 1818	Decatur	General Daniel Morgan of Pennsylvania
Perry	December 13, 1819	Marion	Commodore Oliver H. Perry of the United States Navy
Pickens	December 19, 1820	Carrollton	General Andrew Pickens of South Carolina
Pike	December 17, 1821	Troy	General Zebulon M. Pike of New Jersey
Randolph	December 18, 1832	Wedowee	John Randolph of Virginia
Russell	December 18, 1832	Phenix City	Colonel Gilbert C. Russell of the United States Army
St. Clair	November 20, 1818	Ashville, Pell City	General Arthur St. Clair of Revolutionary War fame
Sanford	October 8, 1868		H. C. Sanford of Cherokee County (original name of Lamar County)
Shelby	February 7, 1817	Columbiana	Governor Isaac Shelby of Kentucky
Sumter	December 18, 1832	Livingston	General Thomas Sumter of South Carolina
Talladega	December 18, 1832	Talladega	An Indian village or the Indian word meaning "border town"
Tallapoosa	December 18, 1832	Dadeville	Tallapoosa River or the Indian Word meaning "pulverized rock"
Tuscaloosa	February 7, 1818	Tuscaloosa	Indian word meaning "Black Warrior"
Walker	December 20, 1824	Jasper	Senator John Williams Walker of Alabama
Washington	June 4, 1800	Chatom	President George Washington
Wilcox	December 13, 1819	Camden	Lieutenant Joseph M. Wilcox of the United States Army
Winston	February 12, 1850	Double Springs	Governor John A. Winston of Alabama

# Appendix II

## Alabama Governors

<b>Governor/Home County</b>	<b>Dates in Office/Party</b>	<b>Birthplace</b>
William Wyatt Bibb Autauga County	1819-1820 Democrat	Virginia
Thomas Peyton Bibb Limestone County	1820-1821 Democrat	Virginia
Israel Pickens Greene (Hale) County	1821-1825 Democrat	North Carolina
John Murphy Monroe County	1825-1829 Democrat	North Carolina
Gabriel Moore Madison County	1829-1831 Democrat	North Carolina
Samuel B. Moore Jackson County	1831 Democrat	Tennessee
John Gayle Greene (Hale) County	1831-1835 Democrat	South Carolina
Clement Comer Clay Madison County	1835-1837 Democrat	Virginia
Hugh McVay Lauderdale County	1837 Democrat	South Carolina
Arthur Pendleton Bagby Monroe County	1837-1841 Democrat	Virginia
Benjamin Fitzpatrick Autauga County	1841-1845 Democrat	Georgia
Joshua Lanier Martin Limestone County	1845-1847 Democrat	Tennessee

<b>Governor/Home County</b>	<b>Dates in Office/Party</b>	<b>Birthplace</b>
Reuben Chapman Madison County	1847-1849 Democrat	Virginia
Henry Watkins Collier Tuscaloosa County	1849-1853 Democrat	Virginia
John Anthony Winston Sumter County	1853-1857 Democrat	Alabama Madison County
Andrew Barry Moore Perry County	1857-1861 Democrat	South Carolina
John Gill Shorter Barbour County	1861-1863 Democrat	Georgia
Thomas Hill Watts Montgomery County	1863-1865 Democrat	Alabama Butler County
Lewis Eliphalet Parsons* Talladega County	1865 Democrat	New York
Robert Miller Patton Lauderdale County	1865-1867 Republican	Virginia
William Hugh Smith Randolph County	1868-1870 Republican	Georgia
Robert Burns Lindsey Colbert County	1870-1872 Democrat	Scotland
David Peter Lewis Madison County	1872-1874 Republican	Virginia
George Smith Houston Limestone County	1874-1878 Democrat	Tennessee
Rufus Wills Cobb Shelby County	1878-1882 Democrat	Alabama St. Clair County
Edward Asbury O'Neal Lauderdale County	1882-1886 Democrat	Alabama Madison County
Thomas Seay Hale County	1886-1890 Democrat	Alabama Hale County

**Note: General Wager Swayne served as military governor (1867-1868)**

**\*Provisional Governor**

<b>Governor/Home County</b>	<b>Dates in Office/Party</b>	<b>Birthplace</b>
Thomas Goode Jones Montgomery County	1890-1894 Democrat	Georgia
William Calvin Oates Henry County	1894-1896 Democrat	Alabama Bullock County
Joseph Forney Johnston Jefferson County	1896-1900 Democrat	South Carolina
William James Samford Lee County	1900-1901 Democrat	Georgia
William Dorsey Jelks Barbour County	1901-1907 Democrat	Alabama Macon County
Russell McWhorter Cunningham** Jefferson County	1904-1905 Democrat	Alabama Lawrence County
Braxton Bragg Comer Jefferson County	1907-1911 Democrat	Alabama Barbour County
Emmet O'Neal Lauderdale County	1911-1915 Democrat	Alabama Lauderdale County
Charles Henderson Pike (Bullock) County	1915-1919 Democrat	Alabama Bullock County
Thomas Erby Kilby Calhoun County	1919-1923 Democrat	Tennessee
William Woodward Brandon Tuscaloosa County	1923-1927 Democrat	Alabama Talladega County
David Bibb Graves Montgomery County	1927-1931 1935-1939 Democrat	Alabama Montgomery County
Benjamin Meeks Miller Wilcox County	1931-1935 Democrat	Alabama Wilcox County
Frank Murray Dixon Jefferson County	1939-1943 Democrat	California

\*\*Acting Governor while Governor Jelks was ill

<b>Governor/Home County</b>	<b>Dates in Office/Party</b>	<b>Birthplace</b>
Chauncey M. Sparks Barbour County	1943-1947 Democrat	Alabama Barbour County
James Elisha Folsom Cullman County	1947-1951 1955-1959 Democrat	Alabama Coffee County
Gordon Persons Montgomery County	1951-1955 Democrat	Alabama Montgomery County
John Malcolm Patterson Russell County	1959-1963 Democrat	Alabama Tallapoosa County
George Corley Wallace Barbour County	1963-1967 1971-1979 1983-1987 Democrat	Alabama Barbour County
Lurleen Burns Wallace Barbour County	1967-1968 Democrat	Alabama Tuscaloosa County
Albert Preston Brewer Morgan County	1968-1971 Democrat	Tennessee
Forrest Hood James Lee County	1979-1983 Democrat	Alabama Chambers County
Guy Hunt Cullman County	1987-1993 Republican	Alabama Cullman County
James Elisha Folsom Jr. Cullman County	1993-1995 Democrat	Alabama Cullman County
Don Siegelman Mobile County	1999-2003 Democrat	Alabama Mobile County
Bob Riley Clay County	2003-2011 Republican	Alabama Clay County
Robert Bentley Tuscaloosa County	2011- Republican	Alabama Shelby County



## Alabama State Song

### Alabama

Words by Julia S. Tutwiler, Music by Edna Gockel-Gussen

*Alabama, Alabama, We will aye be true to thee,  
From thy Southern shores where groweth,  
By the sea thy orange tree.  
To thy Northern vale where floweth,  
Deep blue the Tennessee,  
Alabama, Alabama, we will aye be true to thee!*

*Broad thy stream whose name thou bearest;  
Grand thy Bigbee rolls along;  
Fair thy Coosa-Tallapoosa  
Bold thy Warrior, dark and strong,  
Goodlier than the land that Moses  
Climbed lone Nebo's Mount to see,  
Alabama, Alabama, we will aye be true to thee!*

*From thy prairies broad and fertile,  
Where thy snow-white cotton shines,  
To the hills where coal and iron  
Hide in thy exhausted mines,  
Strong-armed miners—sturdy farmers;  
Loyal hearts what'er we be,  
Alabama, Alabama, we will aye be true to thee!*

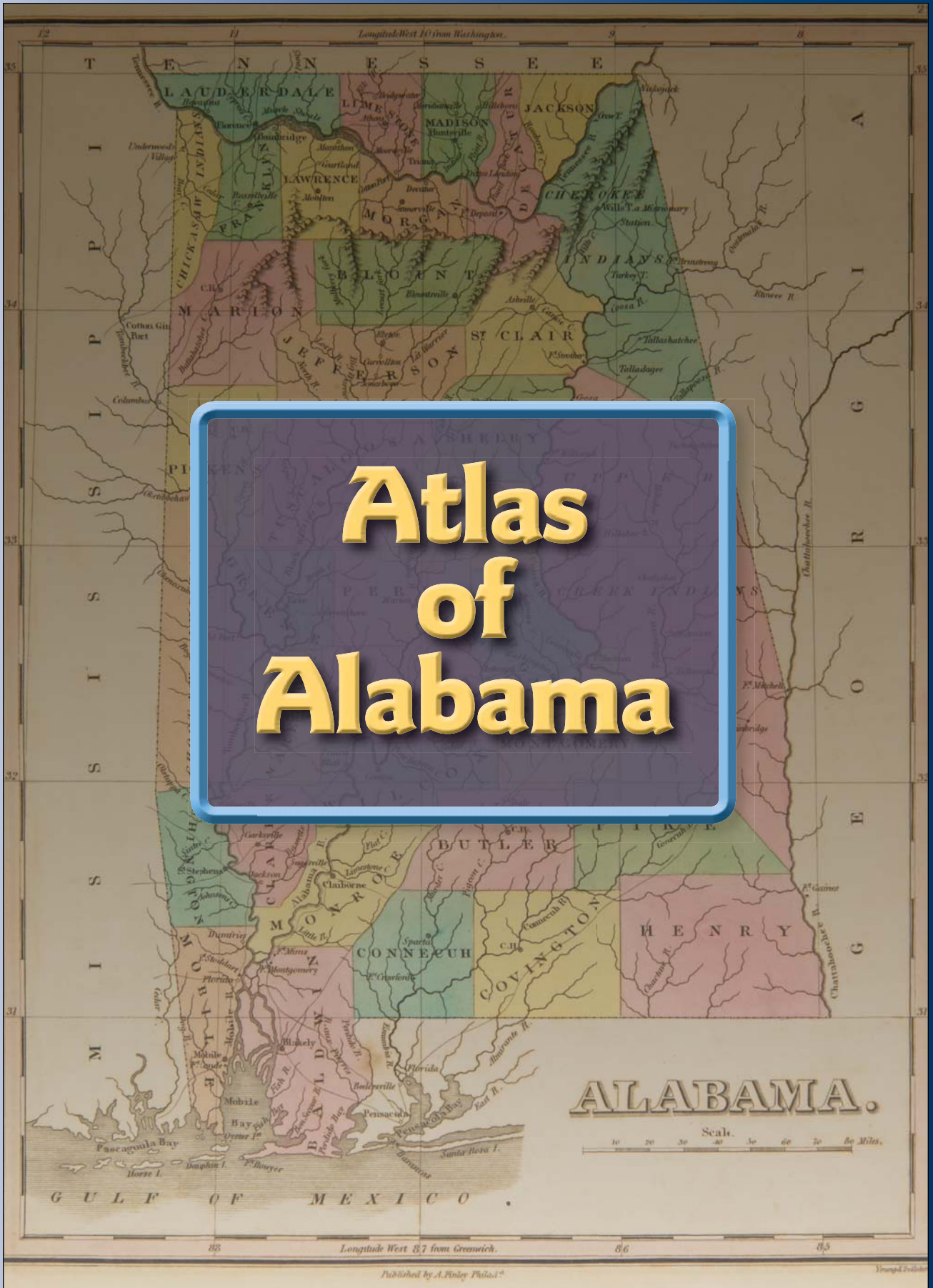
*From thy quarries where the marble  
White as that of Paros gleams  
Waiting till thy sculptor's chisel,  
Wake to life thy poet's dreams;*

*Fear not only wealth of nature,  
Wealth of mind has no fee,  
Alabama, Alabama, we will aye be true to thee!*

*Where the perfumed south-wind whispers,  
Thy magnolia groves among,  
Softer than a mother's kisses,  
Sweeter than a mother's song,  
Where the golden jasmine trailing,  
Woos the treasure-laden bee,  
Alabama, Alabama, we will aye be true to thee!*

*Brave and pure thy men and women,  
Better this than corn and wine  
Make us worthy, God in Heaven  
Of this goodly land of Thine.  
Hearts as open as thy doorways.  
Liberal hands and spirits free.  
Alabama, Alabama, we will aye be true to thee!*

*Little, little can I give thee,  
Alabama, mother mine.  
But that little—hand, brain, spirit.  
All I have and am are thine.  
Take, O take, the gift and giver.  
Take and serve thyself with me.  
Alabama, Alabama, we will aye be true to thee!*



# Atlas of Alabama

ALABAMA.

Scale. 10 20 30 40 50 60 70 80 Miles.

# Atlas of Alabama



# Alabama in the World



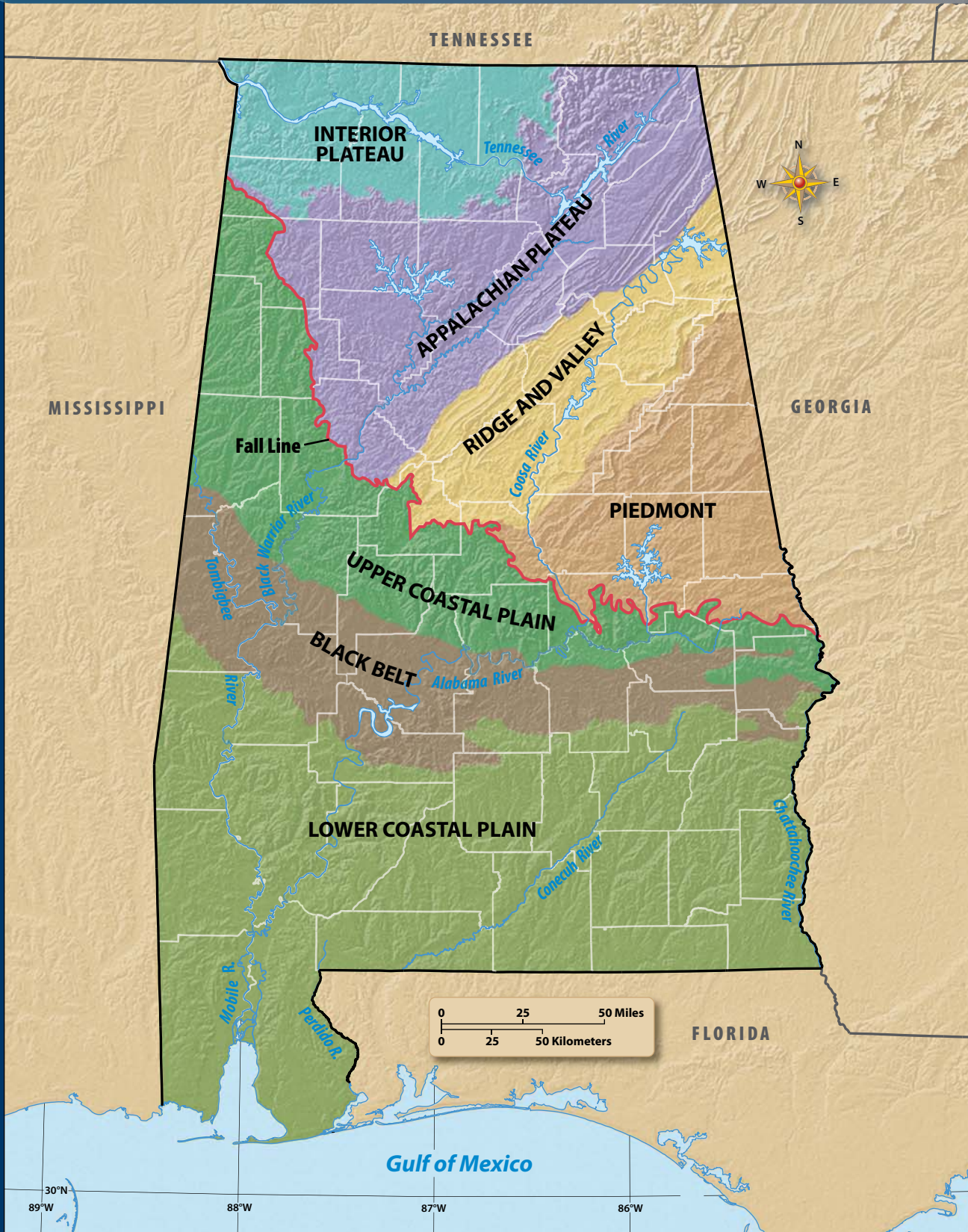
# Atlas of Alabama



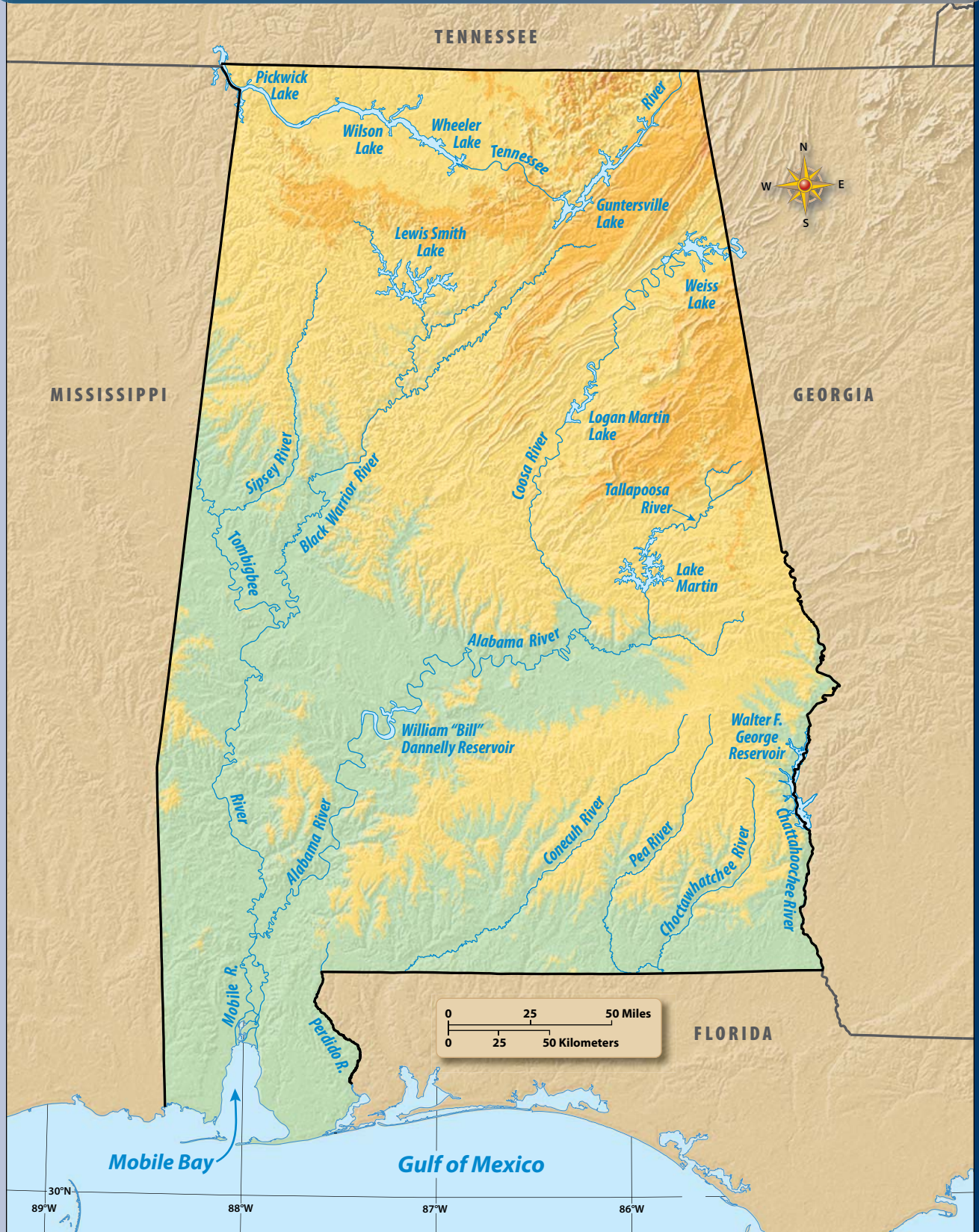
# Alabama in the United States



# Atlas of Alabama Land Regions

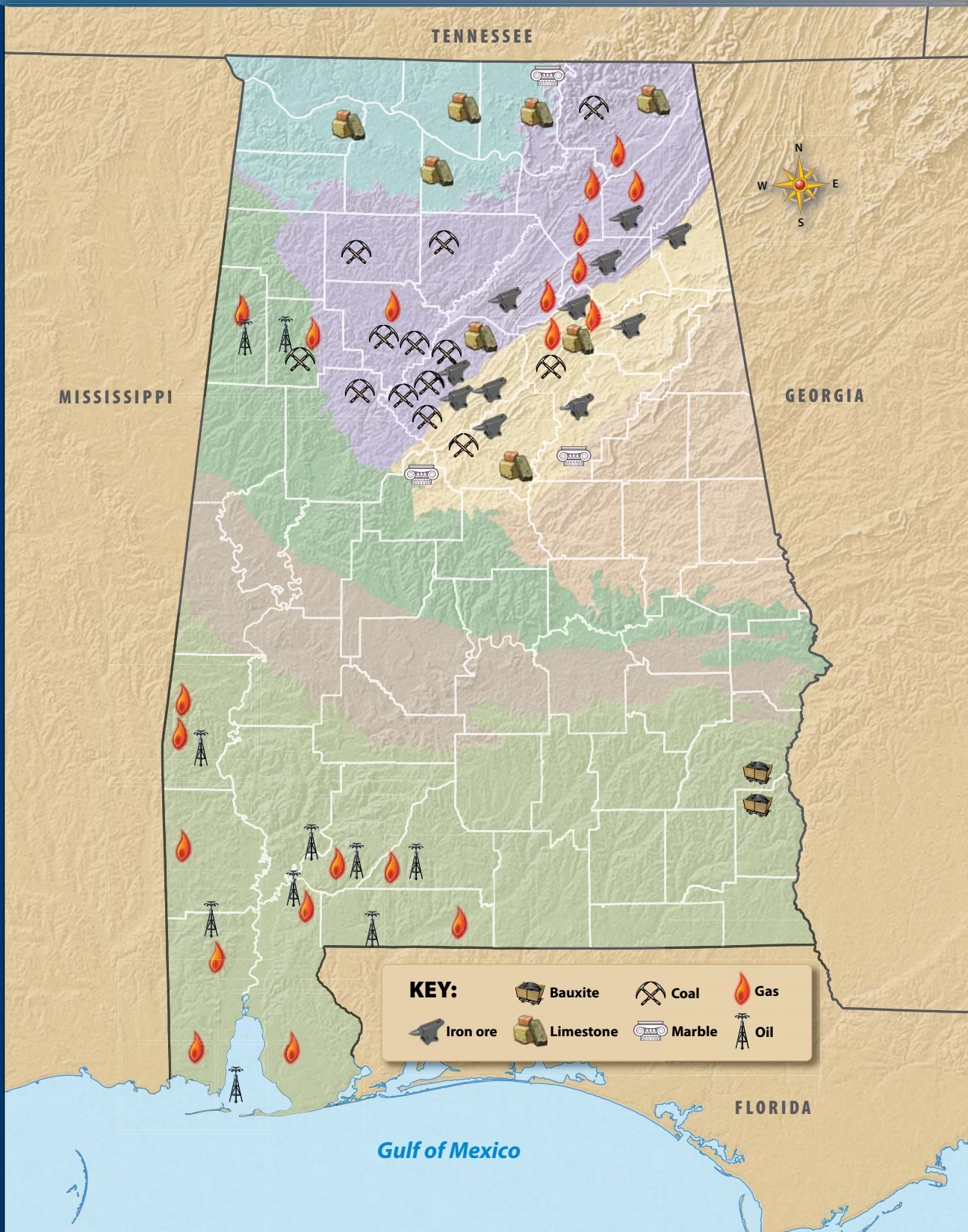


# Atlas of Alabama Rivers & Lakes

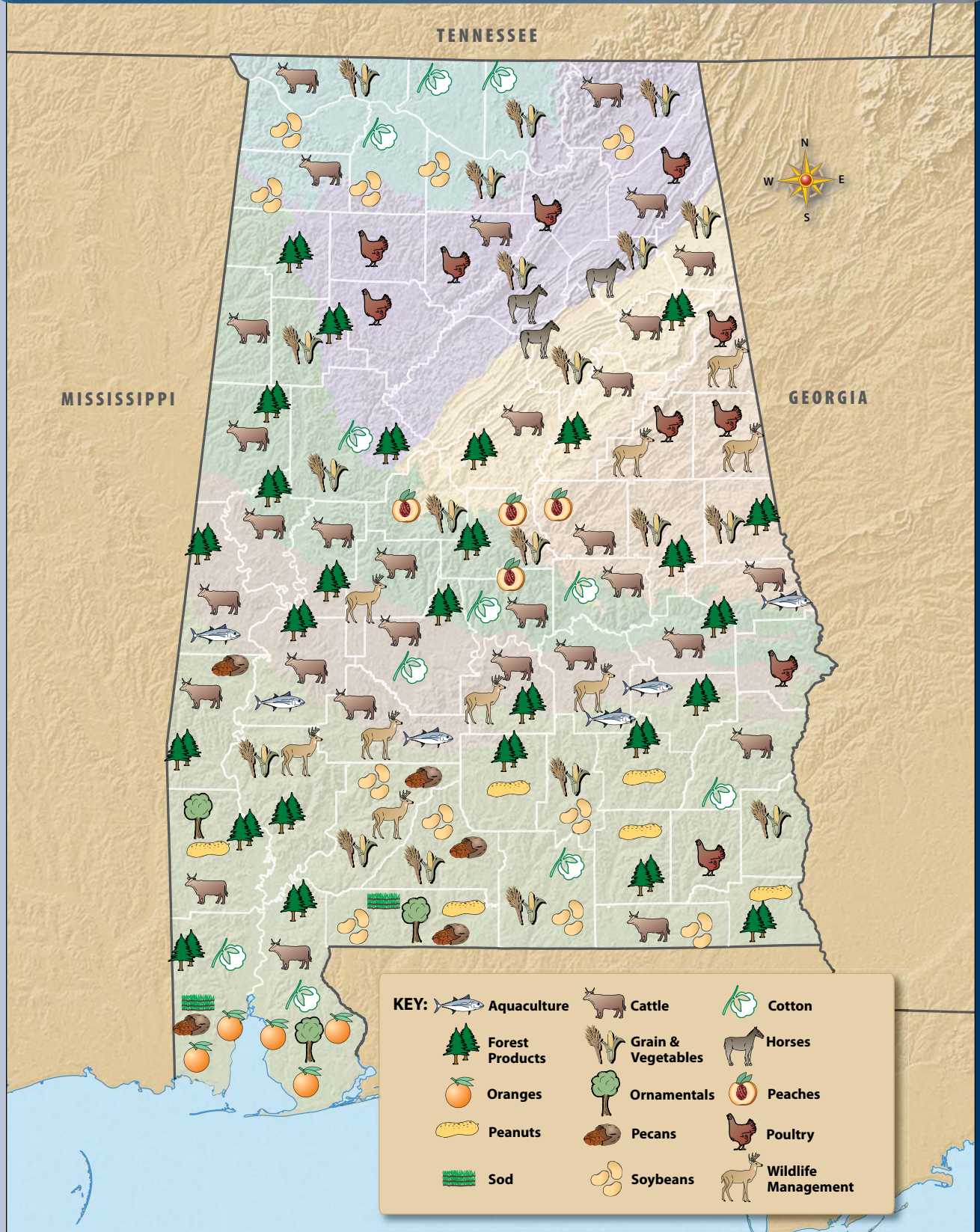




# Atlas of Alabama Mineral Resources

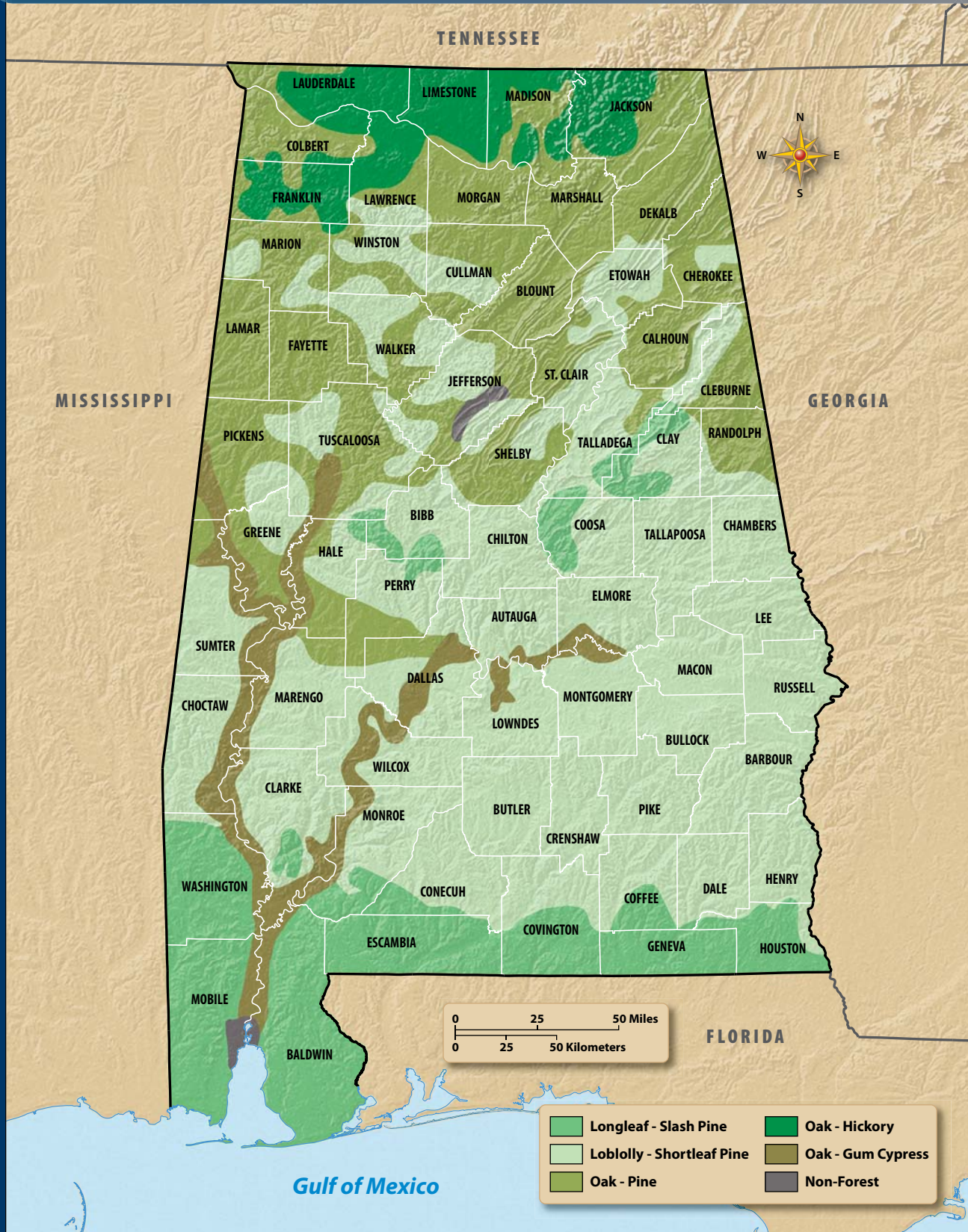


# Atlas of Alabama Agricultural Resources

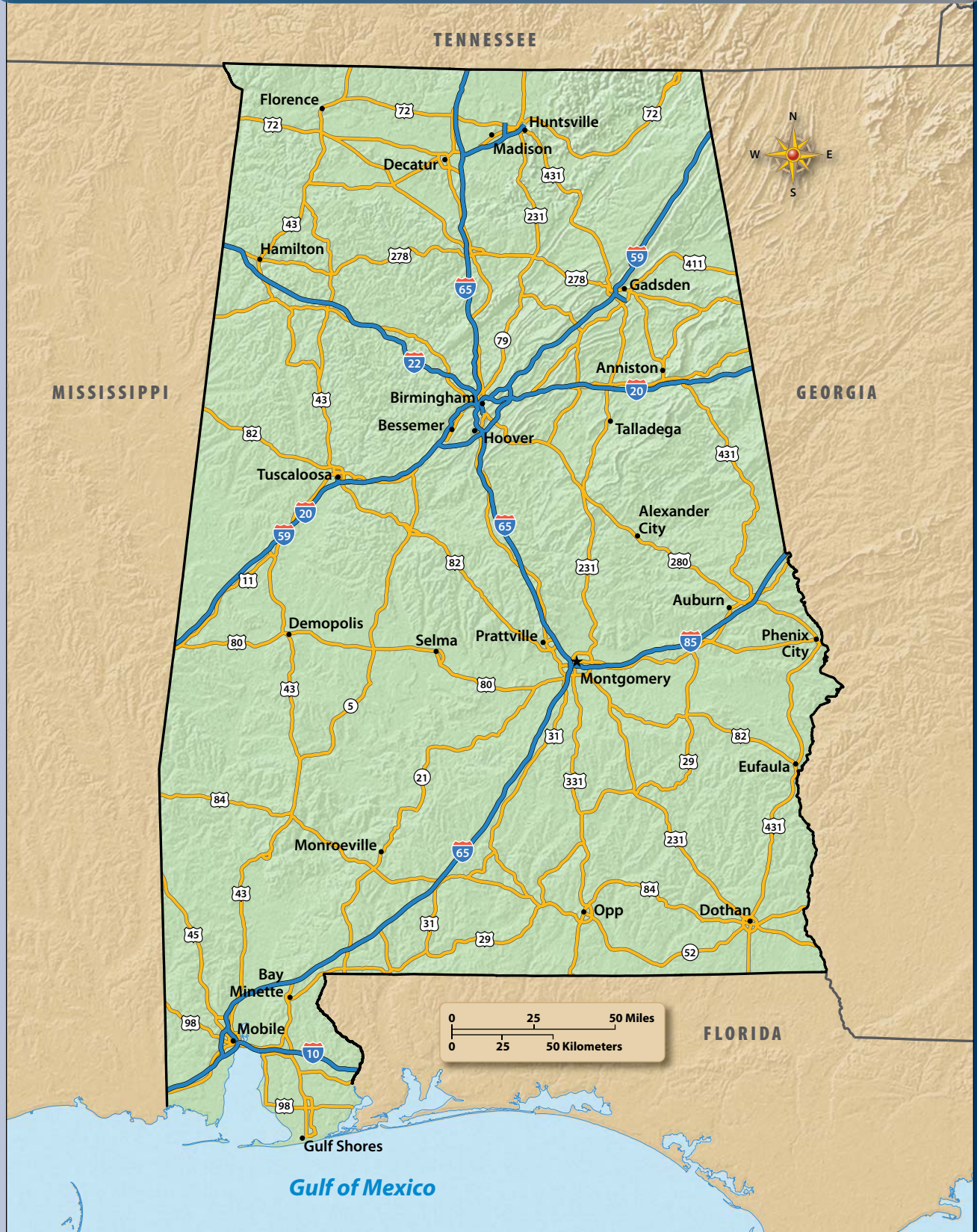


KEY:					
	Aquaculture		Cattle		Cotton
	Forest Products		Grain & Vegetables		Horses
	Oranges		Ornamentals		Peaches
	Peanuts		Pecans		Poultry
	Sod		Soybeans		Wildlife Management

# Atlas of Alabama Forest Types

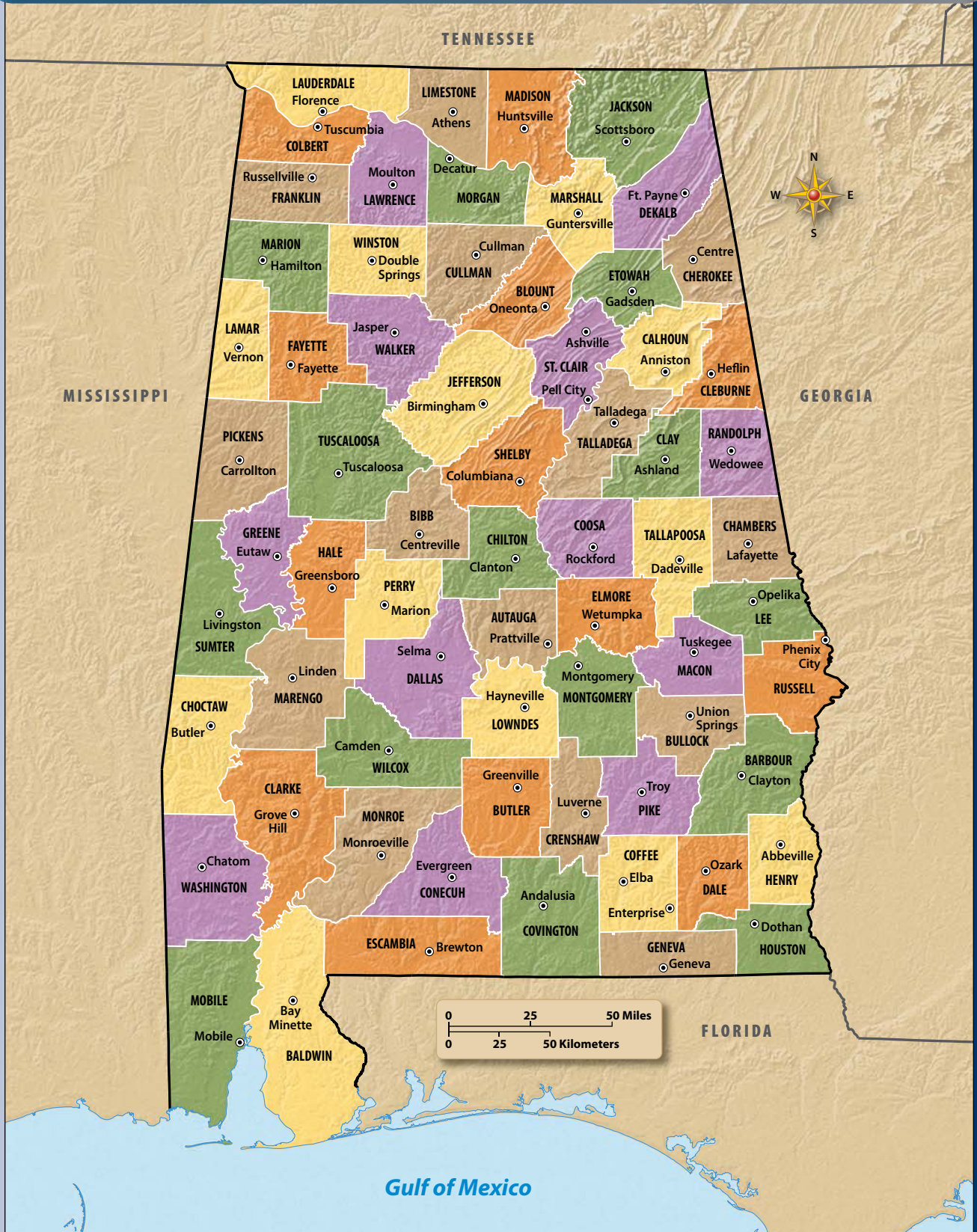


# Atlas of Alabama Roads & Highways





# Atlas of Alabama County Seats



# Glossary

This glossary contains those terms that are in **bold color** in the textbook. The chapter in which the term appears is shown in parentheses at the end of the definition.

## A

**agricultural economy** an economy that is farm-related (9)

**Allies** the group of countries that fought the Axis powers in World War II (largest were England, France, the Soviet Union, and the United States); See “ally” (11)

**ally** a friend or partner (4)

**al Qaeda** the group of terrorists who carried out the 9/11 attacks (13)

**amendment** an addition or change, such as to a constitution or other document (3)

**American Revolution** the war American colonists fought to gain freedom from Great Britain’s rule (3)

**ammunition** bullets and gunpowder, materials to load into a weapon (4)

**amphibious** living on land and in water (11)

**ancestor** a person from long ago who is a direct relative (3)

**antique** something made long ago (1)

**Appalachian Plateau** geographic region that begins in Alabama around Jasper and extends north through Tennessee and Kentucky into western New York (2)

**aquifer** an area with layers of gravel and rock that act like sponges; it is where

water is stored beneath the surface of the earth (2)

**architecture** the style of a building such as Colonial or Victorian (1)

**armistice** agreement to stop the war (10)

**artesian well** a well that produces flowing water (without pumping) (6)

**arthritis** a joint disorder (16)

**Articles of Confederation** the plan for a national government adopted by the Continental Congress in 1781 (3)

**assassinate** to kill someone; usually a murder for political reasons (8)

**assembly line** a manufacturing method where products are made on a moving belt (10)

**assessment** the amount property is valued at for taxation (15)

**Axis powers** the group of countries that fought the Allies in World War II (largest were Germany, Italy, and Japan) (11)

## B

**bill** a suggested law (15)

**black codes** laws passed to limit the freedom of African Americans (8)

**blast furnace** a furnace that uses a blast of hot air to melt pure iron to remove it from iron ore (6)

**blockade** the use of naval forces to stop shipping (7)

**bombardier** an airplane crew member who drops the bombs (11)

**boundary** border or line, such as between states or countries (3)

**boycott** a refusal to use goods or services (12)

**braille** a way of writing with raised characters for the use of people who are blind or visually impaired (10)

## C

**cabinet** the president's highest level of advisors (16)

**cadet** young military student (7)

**Cajun** a person of French heritage living in Louisiana, Mississippi, or Alabama (1)

**capital** a city that is the seat of government (1)

**capitol** the building in which the legislature meets (6)

**carpetbagger** a person who came to the South from the North after the Civil War; some came to help Southerners, but others came seeking profit or political power (8)

**ceasefire** a truce that means all fighting stops (13)

**cede** to give up something, such as land or rights (5)

**census** an official count of people (6)

**civil court** the court system that rules on disputes between people (15)

**civilian** a person who is not military (11)

**civil rights** the basic rights that belong to all citizens (9)

**climate** the average weather over a long time (2)

**Coastal Plain** geographic region that includes the southern part of Alabama and stretches from Texas to New Jersey (2)

**coke** a fuel to heat blast furnaces; made by baking coal in a very hot furnace

without setting it on fire (9)

**Cold War** a time after World War II when tension existed between the United States and the Soviet Union; called "cold" because there was no actual fighting (11)

**colony** a settlement of people in a new land who are ruled by their homeland (3)

**combat** fighting, as in a war (11)

**command** to be in charge; commander is a military title (3)

**communist** a form of government where the state owns all property and the government makes all economic plans (11)

**commute** to travel to work regularly (10)

**conquistador** a Spanish conqueror (3)

**constitution** a written statement of basic laws (3)

**convict-leasing** the practice of selling the labor of prisoners (16)

**cotton gin** a machine invented by Eli Whitney that takes cotton seeds out of the white fibers (bolls); short for "cotton engine" (5)

**council** a group of people chosen to make decisions for a larger group, such as a tribe (4)

**county seat** the town or city where the courthouse is located (15)

**credit** getting an item now and paying for it over time (9)

**criminal court** the court that handles cases when a person is charged with a crime (15)

**culture** the beliefs and customs of a group of people (1)

## D

**deciduous tree** a tree that loses its leaves each winter (2)



**Declaration of Independence** a document in which the 13 original colonies stated their intention to separate from Great Britain; signed on July 4, 1776 (3)

**deed** a legal document that proves who owns the land (6)

**delegate** representative, a person who represents a group of people (3)

**deliberate** something carefully thought out (12)

**delta** an area where a river divides before flowing into a larger body of water (2)

**democratic** a form of government in which people elect their leaders and have protected rights; people can own property and businesses (11)

**depletion** using up something such as nutrients in the soil (13)

**depression** a time of severe economic problems (11)

**desegregation** ending the practice of segregation of the races (12)

**destination** the end of a trip (1)

**disarm** to lay down weapons or arms; in the war in Iraq, it meant the Iraqis had to destroy their weapons of mass destruction (13)

**discriminate** to treat differently and unfairly (12)

**distinguished** showed a special talent or achieved something special (11)

**diversify** to have many different kinds of something, such as several industries in an area (13)

**dome** a roof that is round, like half of a hollow ball (6)

**draft** a process where the government requires people to serve in the military (10)

**drought** a period of weeks or months with almost no rainfall (2)

**E**

**economic** relating to activities that try to make money (5)

**economy** includes all the things people do to make and sell goods and services (5)

**ecosystem** the living things (plants and animals) and nonliving things (air, water, soil, and climate) in a certain area (2)

**elect** to choose by vote (4)

**entrada** journey, in Spanish (3)

**entrepreneur** a person who operates and assumes the risk of a business (16)

**estuary** a place where freshwater from rivers mixes with saltwater from the ocean (2)

**evacuate** to leave the area because of danger (2)

**evergreen tree** a tree that keeps its leaves throughout the year (2)

**executive branch** the branch of government that carries out the laws—for the United States, the president heads this branch; for the state, the governor is the head (3)

**exhibit** a display to show something (1)

**expand** to enlarge or increase (9)

**expedition** a trip made by a group for a special purpose such as exploring unknown lands (3)

**F**

**facility** a place that offers services such as restrooms, schools, or transportation. (12)

**Fall Line** a geological boundary that separates the Coastal Plain from other regions (2)

**fertile** good for growing things (2)

**first-responder** one of the people who rush to help in case of emergency, such as police officers and firefighters (13)

**flash flood** flooding caused by heavy

rainfall that can make water in ditches and streams rise very quickly (2)

**flatboat** a wide, flat-bottom boat made of split logs and sealed with tar (6)

**fleet** a group of ships (7)

**foundry** a place for casting metal (6)

**4-H** a club for students where they learn about farming, good health, citizenship, and cooking; stands for Heart, Hands, Health, and Head (1)

**freedman** a black person who was not a slave (5)

**frontier** land beyond settled areas (5)

**Future Farmers of America (FFA)** a club for students where they learn about farming, citizenship, and other life skills (1)

## G

**generate** to make or produce power (10)

**geology** study of the history of Earth, especially the history recorded in rocks (2)

**governor** the head of the executive level of a state or territorial government (3)

**groundwater** water stored naturally in aquifers; may seep out and form springs (2)

## H

**habitat** the place where animals or plants live (1)

**heritage** ways of life passed on from one generation to the next (1)

**historic Indians** American Indians who were living in the New World when the Europeans arrived (4)

**historic place** a place where something important in history happened (1)

**Holocaust** the murder of millions of Jewish people during the 1930s and 1940s (11)

**hurricane** a large and powerful circle-shaped storm that forms over warm seas (2)

**hydroelectric** the use of waterpower to generate electricity (10)

## I

**immigrant** a person who settles in a new country (1)

**immunity** resistance, such as to disease(s) (3)

**impurity** unwanted part, such as a pollutant (9)

**inaugurate** to swear in to office in a ceremony (7)

**industry** a factory or place to work that makes products or services (1)

**integration** ending segregation and being combined into one group (12)

**Interior Plateau** geographic region that begins in northern Alabama and extends north to the Ohio River and into southern Indiana; this part of Alabama is sometimes called the Highland Rim (2)

**interpreter** a person who translates one language to another (3)

## J

**Jim Crow laws** laws that kept blacks from using the same public facilities as whites (9)

**journal** daily writings like a diary (3)

**judicial branch** the branch of government that rules on the meaning of laws; the court system (3)

**jury** a group of citizens chosen to attend a trial and make a decision on the case (15)

## K

**keelboat** a riverboat that could go upstream as well as downstream (6)

## L

**labor force** the group of available workers (14)

**legislative branch** the branch of government that makes the laws; the U.S. Congress and the state legislature (3)

**lightning** electricity moving from cloud to cloud or from a cloud to Earth (2)

**livestock** animals such as cattle, pigs, sheep, and horses (1)

## M

**maintenance** working on equipment to make it run like new (11)

**maritime** close to or about the sea (15)

**mass communication** communicating to large numbers of people; newspapers and the Internet are means of mass communication (14)

**migration** when a group of people or animals move from one area to another (4)

**militia** citizens trained as soldiers (4)

**mill** a factory built near a river with swift-flowing water (5)

**mineral** ore or other substance found naturally in the earth (2)

**missionary** a person who goes to another area to do religious work (4)

**motto** a statement of what a group believes in or stands for (15)

**multimodal** a kind of rail shipment in which goods are sent in containers and transferred to ships, planes, or trucks (14)

**municipal** referring to cities and towns (15)

**munitions** military supplies such as bullets, bombs, and explosives (10)

**Muslim** a person who follows the teachings of the Islam religion (13)

## N

**NAACP** National Association for the Advancement of Colored People; an organization that works for the rights of black Americans (12)

**natural environment** the things that are part of nature (2)

**natural hazard** a weather event that can be dangerous or cause problems for people, such as an ice storm, flash flood, thunderstorm, tornado, or hurricane (2)

**natural resource** something in the natural environment that people can use (2)

**natural vegetation** plants that grow naturally and are not planted by people (2)

**navigable** passable by ships (if a waterway is deep and wide enough for ships) (5)

**navigator** an airplane crew member who finds routes for the flight and locates the targets (11)

**Nazi** a follower of Adolf Hitler (11)

**New Deal** government programs to help people and the economy during the Great Depression (11)

**9/11** the date, September 11, 2001, when several terrorist attacks occurred in the United States (13)

**nonviolent** without violence; peaceful (12)

**normal school** a school for training teachers (9)

## O

**oath** pledge or promise that a person takes when being sworn in to office (6)

**orphan** a child whose parents have died (4)

**overcropping** planting the same crop over and over (10)

## P

- pandemic** widespread disease such as the Spanish flu (10)
- paraplegic** a person who is paralyzed in both legs (16)
- patent** a document registering an invention with the government patent office; gives the inventor sole rights to sell the invention (10)
- Patriot missile** an American antimissile missile (13)
- permanent** lasting, or staying the same (3)
- persuade** to get someone to do something; to convince (4)
- Piedmont** geographic region extending from Alabama through Georgia and the Carolinas all the way to New Jersey (2)
- pioneer** an early settler in a new place (2)
- planetarium** a building with a special ceiling that shows images of the night sky and stars (1)
- plantation** large area of land with a big farm (5)
- planter** a person who owned a plantation (5)
- political party** a group of people who agree on how to run the state or country (8)
- poll tax** a tax that a person had to pay in order to vote (10)
- posthumous** after death; refers to an occurrence after death, such as a military award (11)
- poultry** birds (chickens, turkeys, and quail) raised for food or to lay eggs (14)
- precipitation** water in the form of rain, snow, sleet, or hail (2)
- prejudice** an opinion that is not based on looking at the facts fairly (12)

- prisoner of war (POW)** member of the military who has been captured by the enemy (11)
- procession** a parade; a group moving forward in a ceremonial type of parade (7)
- profession** a job that requires special training and education (16)
- prosecutor** a person who presents a legal case against an accused person (16)
- prosperity** good economic times (11)
- provost** the chief officer of a college (16)

## R

- radical** having extreme or very strong views (8)
- ratify** to approve formally, such as an amendment to the United States Constitution (3)
- ration** to limit, such as the amount of something like food during a time of war (11)
- rebel** a person fighting a war against the government in power (13)
- Reconstruction** the time after the U.S. Civil War (8)
- record** a way of hearing music such as a CD or digital tunes (16)
- recruit** to sign up or hire people (10)
- repeal** to cancel something such as a law (8)
- retail** the sale of products to the final consumer (14)
- revenue** money; for governments, comes mostly from taxes (15)
- Ridge and Valley** geographic region that begins just south of Birmingham and extends into Pennsylvania (2)
- rotunda** round, domed section of a building (6)
- rural** areas where most people live on

farms, not in towns; the population is more spread out than in urban areas (7)

## S

**salt marsh** a grassy, wet area that floods with saltwater each day when the sea level rises with the tide (2)

**scalawag** a white Southerner who cooperated with the military government during Reconstruction (8)

**secede** to withdraw from something as some states did from the Union in the Civil War era (7)

**sectionalism** sectional differences; the belief by people of a certain region that their ideas and ways of life are better and more important than other regions (7)

**segregation** separation of the races (10)

**service industry** the type of industry that provides work without producing goods; workers include waiters, doctors, attorneys, and teachers (14)

**settler** a person who goes to live in a new area (1)

**sharecropper** a farmer who worked someone else's land and gave the landowner a share of the harvest; the landowner provided seeds, tools, and a place to live (9)

**site** a place where something is or was located or happened (1)

**sit-in** a form of protest in which people just sit in an area (12)

**skirmish** a brief fight as in a war (7)

**slave** a person forced to work for someone regarded as the slave's owner (3)

**Social Security Act (SSA)** provides retirement and disability benefits; one of the New Deal programs (11)

**sociobiology** the study of biology through

social systems like those of ants and bees (16)

**speculator** a person who buys something planning to sell it later for a profit (5)

**squatter** a person who cleared and settled land without ownership of the land (5)

**state-of-the-art** modern; latest method of doing something (14)

**stock** a share of ownership in a business (11)

**strip mining** surface mining; when a huge machine digs away the rock and soil that covers a layer of coal (14)

**suborbital** less than a full orbit of Earth (13)

**subtropical** a part of the world that borders the tropical zones; describes Alabama's temperate climate (2)

**suburb** an area outside of a city (more densely populated than rural areas) (9)

**successor** one who follows, such as the next person in a political office (8)

**suffrage** the right to vote (11)

**supply and demand** an economic term describing the difference between what industries and/or farms produce (supply) and what they can sell (demand) (11)

**surface water** the water in rivers, streams, lakes, and wetlands (2)

**surrender** to give up or to "lay down arms" in war (7)

**survey** to measure and map out an area (3)

**swamp** a wetland, usually a flooded forest (2)

**symbol** one thing that stands for another (12)

**synagogue** a house of worship for a Jewish congregation (6)

**synthetic** a man-made material (14)

## T

- tax** money charged to people and businesses for services provided by the government (3)
- technology** use of knowledge, tools, and skills (2)
- temperature** a measurement of how hot or cold something is; expressed in degrees (2)
- tenant farmer** a farmer who had seeds and tools but farmed someone else's land; the farmer paid the landowner a share of the harvest (9)
- terminal** a place with a waiting room and a place to buy tickets (12)
- terrorist** a person who uses violence to cause fear, usually in an attempt to change the ruler or government (13)
- textile** cloth or fabric (1)
- theme** a subject (1)
- therapy** a treatment to help or cure someone (14)
- tornado** a powerful storm with swirling winds and a funnel-shaped cloud (2)
- trial** a legal process where the facts are studied by a court (15)
- tributary** a stream that flows into a river (14)
- truce** agreement to stop fighting (11)
- tuition** school charges (9)

## U

- unemployment** being without a job (11)
- unionist** a person who wanted to stay in the United States and not secede (7)
- United States Constitution** the document that set up the framework and basic laws of our government; signed on September 17, 1787, and ratified in 1788 (3)
- urban** an area of cities or towns; more densely populated than rural areas or the suburbs (7)

## V

- vehicle** a way of transportation (10)
- veto** to say no to something, such as the governor or president can do to a bill (15)

## W

- War on Terrorism** any action taken to stop terrorists; announced by the United States soon after 9/11 (13)
- waterway** a navigable river that can be used for transportation and carrying goods (2)
- weapons of mass destruction (WMD)** weapons that can kill many people at once, such as chemical and biological weapons (13)
- weather** the conditions outside relating to temperature, precipitation, cloudiness, and wind (2)
- wetland** a place that is wet all or part of the year (2)
- whitewater** fast-moving water; rapids (1)
- wholesale** the sale of products to stores that will then resell the products to the final consumer (14)
- Wiregrass** an area that includes southeast Alabama and parts of Florida and Georgia; known for the type of grass that once covered the region (1)

## Y

- yeoman** a person who owns and works a small farm (5)

# Index

The purpose of the index is to help you locate information quickly. The index contains references to text, illustrations, maps, and figures. A page number with *def.* before it indicates a definition. A page number with an **f** before it indicates a figure or chart. A page number with an **m** before it indicates a map. A page number with a **p** before it indicates a photograph, painting, or other illustration.

## A

- Aaron, Henry "Hank," 465  
Abernathy, Ralph D., 338,  
    **p**342, 342-344, **p**344, 351  
Adams Chapel School, **p**186  
Adams, David, 122  
Adams, John Quincy, 188  
Adams, Oscar W., Jr., **p**451,  
    451  
ADDSCO, 319  
Adelaide Mill Village, 253  
Adopt-a-Mile Program.  
    *See* Alabama Department  
    of Transportation.  
Aetna, 251  
Afghanistan, 362, 367-368,  
    **m**367  
Africa, 227  
African Americans, 224, 240,  
    265, 289, 317, 334  
    musical influence, 13  
    in national government,  
        229-231, 337, 353  
    public officials, 230, 341,  
        352  
    population, 233, 276, 289,  
        **f**336  
    in state judiciary, 341  
    in state legislature, 230  
    voters, 276, 277, **f**352  
    *See also* blacks, civil rights  
    movement, freedmen,  
    slaves.  
*Africane*, 152  
African Methodist Episcopal  
    (AME)/Zion churches, 262  
Africans, 37, 151-152  
AfricaTown, USA, 153-154  
AGM-142 missile, 370  
agribusiness, 388-392  
Agricultural and Mechanical  
    College of Alabama  
    *See* Auburn University.  
agricultural economy,  
    *def.*239  
agriculture, 151, 237, 239,  
    241, 243, 247, 388-391  
Air University, Montgomery,  
    412  
Alabama  
    capital, 137, **p**162, 163, 165,  
        168, 170-174, 177, 424  
    counties, 169, **m**170, 170  
    crops, 389-390  
Alabama A&M University  
    *See* Alabama Agricultural  
    and Mechanical University.  
Alabama Agricultural and  
    Mechanical University,  
    244  
Alabama Arms Manufacur-  
    ing Company, 206  
Alabama Ballet, 377  
Alabama Baptist Association,  
    156  
Alabama Christian Move-  
    ment, 344  
*Alabama*, CSS, 215  
Alabama Democratic Party,  
    446  
Alabama Department of  
    Archives and History, 202  
Alabama Department of  
    Conservation and Natural  
    Resources, 433  
Alabama Department of  
    Transportation, 380, 396  
Alabama Dry Dock and Ship-  
    building Company, **p**294  
Alabama Equal Suffrage  
    Association, 446  
Alabama Ethics Commis-  
    sion, 341  
Alabama Girls' Industrial  
    School  
    *See* University of  
    Montevallo.

Alabama Hall of Fame, 246, 349

Alabama Highway Department  
See Alabama Department of Transportation.

Alabama house of representatives, 425-426, 448

Alabama Indians, 112

Alabama Institute for the Deaf and the Blind, 278

Alabama legislature, 425-426, 436

Alabama Men's Hall of Fame, 450, 455

Alabama National Guard, 292, 326, 350, 365, 368-369. *See also* National Guard.

Alabama Polytechnic University  
See Auburn University.

Alabama Power Company, 281, 285

Alabama Public Television, 407

Alabama Register of Landmarks and Heritage, 432

Alabama Republican Party, 229

Alabama River, f53, 56, 87, 93, p112, 112, 121, 123, 136, 153, 168, 172, 178, 183, 285

Alabama Scenic River Trail, m28

Alabama School for the Blind, 380

Alabama School of Fine Arts, 378

*Alabama Scrapbook*: 32

*Alabamians Remember Growing Up, An* (H. Lee), 341

Alabama senate, 425-426, 447

Alabama Shakespeare Festival, 378-379, p379, p453

*Alabama* (singing group), p442-443, p462, 462

Alabama Southern Community College, p376

Alabama State Board of Education, 302, 376

Alabama State Capitol, p130, p159, 170, p174, 174, 192, p199, p201, 350, p418-419, 420

Alabama State College, 338

Alabama State Department of Education, 376

Alabama State Docks, 291, 319, 398

Alabama State Docks Commission, 304, 415

Alabama State House, 424, p425

"Alabama" (state song), 435-436

Alabama State University, 261, 454

*Alabama* (steamship), 178

Alabama Supreme Court, 154

Alabama Symphony, 377

Alabama Territory, 131, 163, 165-169

Alabama Theatre, 19, p303, 303

"Alabama the Beautiful," 435

*Alabama*, USS (battleship), 25, p316, 323

Alabama Women's Hall of Fame, 263

Alcoa, 320

Alden, 251

Aldrich Coal Museum, 26

Alexander City, 287, 293

Alexander, William, 209

Aliceville, 320

Allied Powers (in WWI), 291

Allied Powers (in WWII), 314

Allies, *def.*314

ally, *def.*116, 124, 291, 295, 325, 364, 368, 370

al Qaeda, *def.*366

amendment, *def.*103

Amendments to U.S. Constitution

15th, 229, p265, 265, 334

14th, 228, 229, 265, 300, 334

19th, 302, 446

13th, 224, 226, 265, 334

American Foundation for the Blind, 278

*American Idol*, 464

American Indians  
See Native Americans, specific periods and Tribes.

American Medical Association, 459

American Revolution, *def.*98, 99-100, 171

American Village, 25

*Amistad*, f135

ammunition, *def.*115, 118-119

amphibious, *def.*315

ancestor, *def.*81, 154, 187

Andrews, James O., 217

Annapolis, Maryland, 323, 371



Annie Davis School, **p**259  
Anniston, 10, 20, 108, 251,  
253, **f**276, 293, 317, 320,  
343, 397-398, 402  
Anniston Army Depot, 317,  
**p**327, 327, **p**370, 370, **p**413  
Anniston Ordnance Depot  
*See* Anniston Army Depot.  
*antebellum*, 148-149  
Anthony, Susan B., 302  
antique, *def.*9  
Apache (helicopter), 370  
Apollo (space program), 373-  
374, 378  
Apollo-Soyuz Test Project,  
374  
Appalachian Plateau region,  
**m**41, 48, **p**49, 55, 164, 400  
Appomattox Court House,  
Virginia, 216, **p**217  
aquaculture, 392  
aquifer, 54, *def.*55  
Arab, 70  
Arabian Peninsula, 364  
archaeologists, 87-89  
architecture, *def.*19, 20, 21, 23  
Arkansas, 86, 201  
armistice, *def.*295  
Army Nurse Corps, 318  
artesian well, *def.*171  
arthritis, *def.*457  
Articles of Confederation,  
*def.*102, 196  
artifact, 209, 300  
Arrington, Richard, **f**333  
Ashville, **f**145, 145  
Asians, 37, 70, **f**352  
assassinate, *def.*224, 351  
assembly line, *def.*284  
assessment, *def.*434  
Athens, 9, 108, 210, 310

Atlanta Braves, 465  
Atlanta Exposition (1895),  
247  
Atlanta, Georgia, 247, 465  
Atmore, 11, **f**33, 127  
atomic bombs, 321-322  
Attala, 189  
attorney general, state, 424  
Auburn, 22, 108, 213, 244,  
**p**430  
Auburn University, 243-244,  
315, 406, 465, 466  
*Audemus jura nostra defend-*  
*ere*, 435  
auditor, state, 424  
Audubon Bird Sanctuary, 26  
Austill, Jeremiah, **p**121, 121  
Austria, 312  
Austria-Hungary, 290  
Autauga County, **f**145, 184-  
185, 306  
Autaugaville, 206  
Avondale Mills, 320  
Axis powers, *def.*314, 320

## **B**

Balboa, Vasco Núñez de, **f**79  
Baldwin County, 56, 88, 125,  
**f**145, 393  
Bankhead Forest, 30  
Bankhead, John H., Jr.,  
**p**449, 449  
Bankhead, John Hollis, Sr.,  
**p**449, 449  
Bankhead, William B., **p**449,  
449  
Baptist, 156, 185. *See also*  
specific churches.  
Barbour County, **f**145, 448  
Barkley, Charles, **p**465, 465  
Barroti, Juan, 87

Barton Academy, 186  
baseball, 306, 465-467, 469  
*Basilosaurus cetoides*, 437-  
438  
Battle of  
Bull Run, 204  
Burnt Corn Creek, 119-121  
Chickamauga, 204  
Coral Sea, the, 323  
Gettysburg, **p**204, 204  
Holy Ground, 123, **p**123  
Horseshoe Bend, **m**124,  
**p**124, 124-126  
Midway, 323  
Mobile Bay, 25, 214  
Nashville, 204  
New Orleans, 122  
San Juan Hill, 266  
Bayou La Batre, 9, 353  
Bayview, 251  
Bazares, Guido de las, 86  
Beasley, Daniel, 119  
Beatrice, 16  
Beauregard, Pierre G. T., 202  
Bechtel-McCone Aircraft, 320  
Beech Grove Factory, 184  
Belau, Herbert, **p**320  
Belgium, 290  
Belk, 9  
Bell, Alexander Graham, 282  
Bell Factory, 184  
Benjamin, Regina, **p**353,  
353, 459  
Bentley, Robert, 424  
Benz, Karl, 284  
Berlin, Germany, 468  
Berman Museum, **p**409  
Bessemer, 182, 251, **f**276,  
341, 466  
Bessemer, Henry, 251  
Bethel, **f**21

Bevill State Community College, 450  
Bevill, Tom, **p**450, 450  
Bibb County, **p**19, **f**145, 182, 206, 248  
Bibb, Thomas, **p**168, 170  
Bibb, William Wyatt, 163, 166-169, **p**168, 170, 301  
Bienville, Jean-Baptiste Le Moyne, Sieur de, **f**79, 90-93  
Bienville Square, 94  
Big Bertha  
    *See* Mighty Wurlitzer.  
Big Warrior, 116  
bill, *def.*425, 448, 450, 457  
Bill of Rights, 103  
Biloxi, Mississippi, 94  
bin Laden, Osama  
    *See* Osama bin Laden.  
Birmingham, 9, 10, 19, 24-26, 32, **p**46, 50, **f**59, 63, **f**65, **p**71, 108, 215, 236, 249-252, 258, 272, **f**276, **p**281, 287, 293, 295, 303, 316, 320-321, 330-331, 341, 343, 346-347, 353, 396, 397, 398, 402, 420  
Birmingham Black Barons, 467  
Birmingham Civil Rights Institute, 330  
Birmingham Equal Suffrage Association, 302  
Birmingham Fairground, 287  
Birmingham March, 344  
Birmingham Museum of Art, 287, 379  
Birmingham-Shuttlesworth International Airport, **p**398  
Birmingham Steel and Iron,

287  
blab schools, 143  
Black Belt, **p**43, 43, 54, 151, 153, 157, 170  
black codes, *def.*224  
Black Creek, 211  
Blackhawk (helicopter), 370  
Black, Hugo, L., **p**337, 447, 451-452, **p**452  
Black Muslims, 347  
blacks  
    *See* African Americans.  
    *See also* civil rights movement, discrimination, freedmen, slavery.  
Black Warrior River, **f**53, 88, 172  
Blackwell, John, 156  
Blakeley State Park, 26  
Blanton, Thomas, 346  
blast furnace, *def.*182, **m**182, 184, 248  
Blitz, the, **p**313  
blockade, *def.*207, 209  
“Bloody Sunday,” 349  
Blount County, **f**21, **f**145, 182, 393  
Blount, Winton M. “Red,” **p**453, 453-454  
Blue, Matthew, 198  
“blues, the,” 5, 10, 11, 13  
Boat Yard, 144  
Bobett, Jim, 203  
Bodmer, Karl, 187  
Boeing rocket facility, 403  
boll weevil, 289  
boll weevil monument, Enterprise, **p**289  
bombardier, *def.*316  
Bonner, Jeffrey, **p**370  
Booker T. Washington Insur-

ance Company, 454  
Booth, John Wilkes, 224, 238  
border states, **m**200  
Boston, Massachusetts, 278  
boundary, *def.*99  
boycott, *def.*339, 342  
Boy Scouts, 294, 371  
BP oil spill.  
    *See* Gulf oil spill.  
braille, *def.*278  
Brewer, Albert, P., 452  
Brewton, 9, **f**65, 402  
Bridgeport, 17  
British  
    *See* Great Britain.  
Broad River Group, 139  
Bronze Star, 323  
Brookley Field, Mobile, 316, 326  
Brooks, Dennis, **p**371, 371  
Brooksville, **f**145  
Brown Chapel AME Church, Selma, **p**348, 348, 349  
Brown, Linda, 337  
Browns Ferry Power Plant, **p**310  
*Brown v. Board of Education*, 337  
Brundidge, 9  
Bryant-Denny Stadium, 32  
Bryant, Paul “Bear,” 465-466, **p**466  
B-29 bomber, 321  
Buchanan, Franklin, 214  
Bucks, 99  
Buffett, Jimmy, 462-463, **p**463  
Bullock County, **f**145, 448  
Bull Run, Battle of, 204  
Bunker Tower, **p**309  
Burnt Corn, **p**71

Burnt Corn Creek, 119  
Burnt Corn Creek, Battle of,  
119-121  
Burroughs, Floyd, **p**305  
Bush, George W., 367, 368,  
369, 447, 455, **p**468  
Butler County, **f**33, **f**145

## C

Cabiness, Charles, 184  
cabinet, *def.*447  
cadet, *def.*215  
Cadillac, Antoine de La  
Mothe, Sieur de, 93  
Caesar (former slave), 121  
Caesar (slave, preacher), 156  
Cahaba, 18, 162, 168, 170-  
172, 175  
Cahaba lily, **p**381, 381  
Cahaba River, **f**53, 168, 381  
Cahaba River Society, 381  
Cahawba  
*See* Cahaba.  
Cahawba coal field, 182  
Cajun, *def.*9  
Calera, 396  
Calhoun County, **f**21, 30,  
123, **f**145, 184, 206, 213,  
327  
Caller, James, 119  
Camden, 108  
camellia, **p**437, 437  
Campbell, Thomas Monroe,  
245  
Camp McClellan.  
*See* Fort McClellan.  
Camp Rucker, 317, 320  
Camp Sibert, 317  
Camp McClellan  
*See* Fort McClellan.  
Canada, 94, 100, 115, 231

Cane Creek Furnace, 184  
capital, *def.*18, 24, 137, 163,  
170, 172  
capitol, *def.*170, 171-174  
Capitol Park, 172  
Carbon Hill, 454  
Carnegie, Andrew, 247  
Carolinas, 82  
carpetbagger, *def.*231  
*Carry Me Home, Birmingham, Alabama, The Climactic Battle of the Civil Rights Revolution* (McWhorter), 347  
Carver, George and Susan,  
460  
Carver, George Washington,  
**p**244, 245, 288, **p**299,  
**p**460, 460-461, **p**461  
museum, 25  
Casey, Parris P., **p**204  
cash crop, 151  
Castleberry, 9  
catfish, **p**392, 392  
Catholic, 77, 95, 185, 186,  
261. *See also* specific  
churches.  
cattle, **p**388, 391  
CCC  
*See* New Deal, programs.  
ceasefire, *def.*365  
Cedar Creek, **f**145  
Cedar Creek Furnace, 182  
cede, *def.*133, 188  
census, *def.*167  
centennial, Alabama, 301  
Central City, 252  
Central Intelligence Agency,  
368  
Centre, 29  
Centreville, 19, **f**65, **f**145

Chambers County, 467  
Chananagi, **f**145  
Charleston Museum, 209  
Charleston, South Carolina,  
97, 202, 209  
Chatom, **f**65  
Chattahoochee River, 26, **f**53,  
54, 159, 180, 189  
“checks and balances,” 103  
chemical plants, 402  
Cherokee County, 182, 184,  
213  
Cherokee Indians, 107, **m**110,  
110-111, 122, 133, 187-189  
“Cherokee Rangers,”  
*See* 19th Alabama Infantry.  
Cherry, Bobby Frank, 346  
Chesapeake Bay, 100  
Chewacla State Park, 44  
Chickamauga, Battle of, 204  
Chickasaw Indians, 107,  
**m**110, 110, 113, 116, 122,  
133, 187, 189  
Chief Ladiga Trail, 30  
Childersburg, **f**21, 83, 319  
China, 312, 324, 326  
Chinook (helicopter), 370  
Choctaw County, 112, 400  
Choctawhatchee River, **f**53  
Choctaw Indians, 107, **m**110,  
110, 112, **p**113, 127, 133,  
187, 189  
Christian, 112, 154, 156, 185  
Churchill, Winston, **p**324  
Citizens Federal Savings and  
Loan Association, 454  
citizenship responsibilities,  
431  
Citronelle, **f**65, 400  
City of Champions, The.  
*See* Gadsden.

civil court, *def.*426  
civilian, *def.*308, 321  
Civilian Conservation Corps (CCC), 308, **p**309  
civil rights, *def.*264-265, 331, 336  
Civil Rights Act of 1964, 347-348  
Civil Rights Act of 1968, 351  
Civil Rights District, 24  
Civil Rights Institute, 24, 347  
Civil Rights Memorial Center, **p**340  
civil rights movement, freedom riders, 342, **p**343, 343  
marches, 344, 348-350, **p**350  
organizations, 335-336, 343-344  
schools and colleges, 337-338  
voting rights, 322, 348-350  
*See also* freedmen, slaves, specific Civil Rights Acts.  
Civil War, 131, 196, 224  
in Alabama, 172, 184, 210-216  
beginning of, 202  
blockade, 207-208  
border states, **m**200, 210  
conditions, 207-208  
deaths, 203, 217  
end of, 216  
slaves and free blacks, 203, 205-206  
submarines, 209  
surrender of Confederate army, 216  
women's roles, 206, 211, 217  
Claiborne, 172

Claiborne, Ferdinand, 119, 123  
Clanton, **f**33, 108  
Clarke County, 88, 152  
Clay County, 262, 369  
Cleburne County, 30, 45, 327  
Cleveland, **f**21  
climate, *def.*37, 50, 58, 63, 66, 68, 318  
Clio, 455  
*Clotilde*, 152, 154  
coal, 181-182, 249, 251-252, 399-400, **p**400  
coalition, 367, 369  
Coastal Plain region, **m**41, 42-43, 55, 164, 183, 255-256  
coat of arms, state, **p**436  
Coffee County, 445  
Coffee, John, **p**122, 123-124  
coke, *def.*249  
Colbert County, **p**428  
Colbert, George, 113, 116  
Colbert, William, 113, 116  
Cold War, *def.*325, 362  
Cole, Nat "King," **p**463, 463  
Collins, Addie Mae, 346  
Collins, Marva, 455  
colony, *def.*77, 81, 86-87, 90-94, **m**97, 115  
Colorado, 302  
Columbiana, 402  
Columbus, Christopher, **p**74, 75, **f**79, **p**80  
combat, *def.*315  
command, *def.*99, 119, 122  
commissioner of agriculture and industries, state, 424  
communication, 407-408  
communist, *def.*324, 362  
commute, *def.*285  
computers, 408-409

Conecuh River, **f**53  
Confederacy.  
*See* Confederate States of America.  
Confederate Memorial Monument, **p**192  
Confederate states, **m**200  
Confederate States of America, 130, 199-202, 207-208, 436  
army, 203-205  
constitution, 200  
navy and ships, 207, 209, 214  
conquistador, *def.*82  
constitution, *def.*103, 168, 199  
Constitution of 1861, Alabama, 199  
Constitution of 1868, Alabama, 229  
Constitution of 1901, Alabama, 276-277, 302, 348, 422, 424  
Constitution of the United States.  
*See* United States Constitution.  
Continental Congress, 102  
convict-leasing, *def.*446  
Coosa, Indian Village, 83  
Coosa Coal Field, 182  
Coosa River, 30, **f**53, 92, 211-212, 251, 380  
Coosa River Valley, 46, 211  
Coral Sea, Battle of the, 323  
cotton, 142, 151, 158  
growing, 46, 151  
cotton gin, *def.*158, 183-184  
Cotton Kingdom, 158  
Cotton State, the, 435

council, 88, *def.*111  
 county commission, 433  
 county courts, 429  
 county government, 428-429  
 county seat, *def.*428, **m**429  
 Courtland Field, 317  
 courts  
   county, 429  
   state, 426-427, **f**427  
   U.S., 422  
 court of appeals, state, 427  
 covered bridges, **f**21  
 Covington County, 393  
 Cradle of the Confederacy.  
   *See* Montgomery.  
 Craig Field, Selma, 316  
 Crane Hill, 9  
 credit, *def.*242, 304  
 Creek Indians (Creek Nation), 97, 107, **m**110, 110-111, 116, 133, 139, 188-189  
 Creek Indian War (1813), 77, 107, 116, 118-125  
 Creek Path, 112  
 Creek "Red Sticks," 107, 112, 116, 118-121, 123-125  
 Creek "White Sticks," 107, 116, 122  
 Crenshaw County, 393  
*Crescent*, the, 396-397  
 criminal court, *def.*426  
 Crittenden, J. J., 205  
 Critter Company, 211-212  
 Crocheron Mansion, **p**162  
 Crockett, Davy, 122-123  
 Crommelin brothers, 323, **p**323  
 Crommelin, Charles, 323  
 Crommelin, Henry, 323  
 Crommelin, John, 323  
 Crommelin, Quentin, 323

Crommelin, Richard, 323  
*Crommelin*, USS, **p**323, 323  
 Crowell, John, 170  
 Croxton, John T., **m**211, 215-216, **p**216  
 Crozat, Antoine, 93  
 Cuba, 75, 82, 92, 175, 266-267  
 Cuba, Alabama, 108  
 Cullman, 8, 273, 445  
 Cullman County, **f**21, 391, 393  
 culture, *def.*7, 37, 69-70, 133, 146-147, 193, 259, 331, 375  
 Cunningham, Emory O., 454  
 Czechoslovakia, 312

## **D**

Dale, Sam, **p**121, 121  
 Dale County, 317  
 Dallas County, 144, 153, 168, 170, 175, 229-230  
 Daphne, 9, 20  
 Dauphin Island, 24, 26, 56, **f**65, **p**67  
 Davis, Benjamin O., **p**317  
 Davis, Jefferson, 130, 200, **p**201, 201  
 Davis Theatre for the Performing Arts, 377  
 Daviston, 18  
 Deatsville, 316  
 DeBardeleben, Henry F., 251  
 Decatur, 9, 12, **f**14, 22, 28, 56, 108, 183, 213, 319, 398, 402, 403  
 Decatur Iron and Steel, 319  
 deciduous tree, **p**66, *def.*67  
 Declaration of Independence, *def.*98, 102

deed, *def.*163  
 DeKalb County, 63, 393  
 de las Bazares, Guido, 86  
 delegate, *def.*102, 103, 169, 198, 200  
 Delgado, Marcus, 87  
 deliberate, *def.*337  
 delta, *def.*56, 57  
 Delta rockets, 403  
 de Luna, Don Tristan, **f**79, **p**87  
 democratic, *def.*324  
 Democratic Party, 225, 232, 264  
 Demopolis, 22, **f**145, 147, 148, 454  
 Denton, Jeremiah A., Jr., **p**363, 363, 452  
 Department of Homeland Security (DHS), 366  
 depletion, *def.*380  
 depression, *def.*304  
 desegregation, *def.*331, 338  
 Desert Shield  
   *See* Operation Desert Shield.  
 Desert Storm  
   *See* Operation Desert Storm.  
*Des Moines*, USS, 323  
 de Soto, Hernando, **p**76, **f**79, 82-83, **m**84, 86, 113, 152  
 DeSoto State Park, 27, **p**48, **p**66, **p**308, **p**433  
 destination, *def.*29  
 Detroit, Michigan, 339  
 Dexter, Andrew, 173  
 Dexter Avenue, 174, 201, 350  
 Dexter Avenue Baptist Church.  
   *See* Dexter Avenue King

Memorial Baptist Church.  
Dexter Avenue King  
Memorial Baptist Church,  
24, 338, 340  
d'Iberville  
See Iberville, Pierre Le  
Moyne, Sieur d'.  
disarm, *def.*369  
discriminate, *def.*336, 347  
disease, 80, 86. *See also*  
pandemic.  
Dismals Canyon, 27  
distinguished, *def.*323, 443  
Distinguished Flying Cross,  
323  
district courts, federal, 331  
Dixie Division, 326  
Dixon, George, 209  
dome, *def.*170, **p**171  
Dora, 450  
Dothan, 8, 9, 26, 27, 108,  
317, 396, 398, 469  
Double Springs, 202  
Douglass Hotel, 166  
Dove, John H. "Red," 454  
draft, *def.*292  
drought, 60, *def.*61, **p**61, 64  
Du Bois, W. E. B., 334, 336  
Duffee, Mary Gordon, 176  
Dunbar, Sir William, 99  
DuPont, 319  
Durant, 144  
Dutch, 152

## **E**

earthquake, **f**109, 117  
East Alabama Male College.  
See Auburn University.  
Eastman, George, 282  
economic, *def.*131, 237, 299,  
304

economy, *def.*158, 195-196,  
198, 252, 274, 289, 293,  
299, 327, 357  
ecosystem, *def.*68  
Edison, Thomas, 280  
Edmund Pettus Bridge, **p**349,  
349-350  
education  
for African Americans,  
244, **p**259, 261  
before Civil War, 150, 173,  
186  
and earnings, **f**411  
funding, 376, 446  
in Reconstruction, 225,  
240, 259  
for settlers, 112, 143-144  
for slaves and free blacks,  
157, 227, 240, 246-247  
for teachers, 244, 261  
today, 375-376  
for women, **p**260, 261  
eggs  
See poultry.  
Egypt, 364  
E. H. Gentry Special Technical  
Facility.  
See Alabama Institute for  
the Deaf and the Blind.  
Eisenhower, Dwight D., 326  
Elberta, 9  
elect, **p**122, *def.*125,  
election of 1860, 193  
elevation, 38, 42-43, 59  
*Ella and Annie*, **p**208  
Ellicott, Andrew, 99  
Ellicott's Line, 99  
Elliott, Carl, **p**423, 423  
Elmore County, 117  
Elyton, 215  
Elyton Land Company, 250

Emancipation Proclamation,  
**p**210, 210  
Enfield rifle, 206  
England  
See Great Britain.  
Enhanced Fujita Intensity  
Scale for Tornadoes, **f**62  
*Enola Gay*, **p**321  
Ensley, 249  
Enterprise, 8  
*entrada*, *def.*86, 87, 94  
entrepreneur, *def.*453  
Episcopalians, 185. *See also*  
specific churches.  
"Era of Good Feeling," 171  
estuary, *def.*57  
Ethiopia, 312  
Etowah County, **f**21, 182, 327  
Eufalo, 110  
Eufaula, 22, 23, 108, 159,  
315  
Europe, 37, 74-77, 80-82,  
**m**84, 85, 91, 96, 107,  
109-110, 113-114, 151, 239,  
370  
Europeans  
See Europe.  
Eutaw, 10, 148  
Eva, 11  
evacuate, *def.*63  
Evans, Walker, 304  
Evergreen, 9, **f**65, 108  
evergreen tree, *def.*67  
Exchange Hotel, 201  
executive branch  
state, 169, 424, **f**427  
U.S., *def.*103, 422  
exhibit, *def.*14  
expand, *def.*248  
expedition, *def.*90  
explorer, 37, 80, 84, 86, 107,  
185

**F**

facility, *def.*334

Fairfield, 371

Fall Line, 43, 54, 381

Falls of the Black Warrior,  
123

Farmar, Robert, 95

Farragut, David G., **p**214, 214

Faunsdale, 9

Fayette, 7

Fearing, Maria, **p**227, 227

Federal Deposit Insurance  
Corporation (FDIC), 310

Federal Road, 42, **p**114,  
**m**115, **p**136, 136

Ferguson Center, 338

fertile, *def.*51,

festivals and fairs, 7-16  
art, 7-8

cultural history, 10-11

fairs, 11-12, 14, 16

food, 8

music, 9-10

regional, **f**14

state, 311

FFA

*See* Future Farmers of  
America.

fighting tarpon, 438

First Baptist Church of Mont-  
gomery, 156, 261, 338

first-responder, *def.*366, **p**366

“First White House of the  
Confederacy,” 201

fish, 392

Fisk University, 341

flag

*See* state flag.

Flagg, Fannie, 468

Flagg, James Montgomery,

**p**290

flash flood, *def.*61

flatboats, *def.*177, **p**178,  
**p**179

fleet, *def.*214

Flint Creek Trail, 30

Flint River, 184

Flomaton, **f**33

floods, 64

Florence, 8, 13, 23, 150, 210,  
231, 261, **f**276

Florida, 54, 57, 82, 99, 200

Flowers, Vonetta Jeffery,  
**p**466, 466

Floyd, John, 122

Folsom, James E. “Big Jim,”  
**p**336, 336, **p**445, 445

Ford, Henry, 284

Ford, Johnny, **p**352

Ford Motor Company, **p**284,  
284

Ford’s Theatre, 224

forestry, 392-393, **p**393

Forrest, Nathan Bedford, 211-  
213, **p**212, 216

Fort at the Alabamas  
*See* Fort Toulouse.

Fort Charlotte, 24, 96, 99,  
**p**101

Fort Condé, 24, 92, 95, **p**96

Fort Dale, **f**145

Fort Rucker, **p**412, 412

Fort Gaines, 24, 214

Fort Jackson, 18, 125, **p**409

Fort Louis de la Louisiane,  
75, **p**91, 92-93

Fort Maurepas, 90-91

Fort McClellan, **p**292, 317,  
320, 326

Fort Mims, 18, **p**119, 119,  
**p**120, 123, **f**145

Fort Morgan, 24, 29, 30, 214

Fort Payne, 10, 27, 443, 462

Fort Rucker, 25, 370

Fort Stoddert, 114, 120, 122

Fort Sumter, 202, **p**203, 203

Fort Tombeckbe, 94

Fort Toulouse, 17, 18, 92-94,  
97, 125

42nd Rainbow Division, 292

foundry, 183, *def.*185

4-H, *def.*14, 16

4th Alabama Infantry  
*See* 42nd Rainbow  
Division.

Fowler, James Bonard, 349

France, 75, 81, 87, 90-94, 99,  
115, 125, 146-147, 152,  
158, 204, 290-291, 312-314,  
362, 436

Francis, Josiah, 116

Franklin, Benjamin, 102-103

Franklin County, 27, 63,  
**f**145, 182, 393, 423

free blacks, 142, 157

freedman, *def.*147, 224

Freedmen’s Bureau, 224-225,  
231, 233, 240, 242

freedom riders.

*See* civil rights.

Free State of Winston, 202

French

*See* France.

*Fried Green Tomatoes at the  
Whistle Stop Café*, 468

frontier, *def.*135, **p**140, **p**141,  
142-143

Fruithurst, 390

fruits, 390

Fry, Anna Gayle, 171

*Memories of Old Cahaba*,  
171

Fujita Intensity Scale for Tornadoes  
See Enhanced Fujita Intensity Scale for Tornadoes.  
Fulton, 180  
Future Farmers of America (FFA), *def.*14, 16

## G

Gadsden, **f**21, 211-212, 250-251, 292-293, 317, 398, 402, 415  
Gainesville, 227  
Gaineswood, **p**148  
Galvez, Bernardo de, 99  
Garrett, Mitchell, 262-263  
Gaston, Arthur G., **p**454, 454  
generate, *def.*281, 310, 400  
Geneva County, 393  
geography, 69, 183  
geology, *def.*41, **p**47  
George C. Marshall Space Flight Center  
See Marshall Space Flight Center.  
George III (English king), **p**95, 96, 98  
Georgia, 54, 82, 114, 121, 188, 200, 230  
Germany, 312-314, 321-322, 372  
GI Bill of Rights, 451  
Girl Scouts, 294  
Girls' Patriotic League, 295  
Gettysburg Address, 205  
Gettysburg, Battle of, **p**204, 204  
Gilbertown, 10  
Gilmore, Thomas, 343  
Girard, 159  
Gleed, Edward, **p**317

Glencoe, **f**33  
Global Positioning System (GPS), **p**408  
Goat Hill, 173-174  
gold, 77, 80-82, 86, **f**165, 179  
Goodwin, John, 159  
Gorgas, William Crawford, **p**267, 267, 274, 459  
Gosse, Philip Henry, **p**144, 144  
government,  
county, 428-429  
municipal, **f**430, 430  
state, 422-427  
U.S., 421-422  
governor, *def.*82, **p**92, 92-93, 99, 163, 169, 424, 425  
governor's mansion, **p**424  
Grange, The, **p**245, 245  
Grant, Ulysses S., **p**217  
Gravity Probe B, 2003 (space program), 374  
Great Britain, 75, 77, 81, 87, 92-103, 107, 114-115, 125, 146, 158, 241, 290-291, 312-313, 324, 364, 367, 372, 436  
See also British, England.  
Great Depression, **p**304, 304-307, 321  
Greatest Generation, the, 321  
Great Migration, 125  
Great War  
See World War I.  
Greene County, 153, 170  
Greensboro, 267  
groundwater, *def.*55  
growing season, 50, 63, 151  
Guam, 266  
Gulf Coast, 29, 56, 80, 86, 147

Gulf of Mexico, 26, **m**52, 117, 207, 321  
Gulf oil spill, 57, 463  
Gulf Shipbuilding, 319  
Gulf Shores, 9, 31  
Gumpa, 154  
Gunter Field, 316  
Guntersville, 183  
Guntersville Lake, 8

## H

habitat, *def.*26, 61, 381  
Hackleburg, 63  
Hale County, 170, 304  
Hall of Fame, Men's, 450  
Hamilton, 8  
Hamm, Mia, 466  
Hampton Institute, 246-247  
Handy, William Christopher (W. C.), 13  
Haralson, Jeremiah, 229, **p**230, 230  
Harlan, 451  
*Harriett* (steamship), 178  
*Hartford*, USS, 214, **p**215  
Hart, Franklin A., **p**315, 315  
Hartselle, 451  
Hatchechubbee, 315  
Hatchet Creek, 262  
Havana, Cuba, 266-267  
Hayden, 321  
Hayes, John, 292  
Hazel Green, 184  
health care, 405-406  
Heart of Dixie, The, 435  
Heflin, 20, **f**65  
Heflin, Howell T., **p**452, 452  
Heflin-Torbert Judicial Building, 424, **p**426  
Helen Keller Fragrance Garden



See Alabama School for the Blind.  
 Helen Keller School of Alabama, 278  
 helicopters, 370  
 See also specific helicopters.  
 Hellfire (missile), 370, 403  
 hematite, **p**50, 183  
 heritage, *def.*7, 9-10, 24, **m**94  
 Hermitage, The, 125  
 Heslip, Joseph, 182  
 Hester, 120  
 Hicks, Taylor, 464, **p**465  
 Highland Rim, 48  
 highways, **m**395, **p**395, 395-396  
 Hill, J. Lister, **p**450, 450  
 Hiroshima, Japan, 321-322  
 Hispanic, 70, **f**352, 376  
 historic district, 19, 22  
 historic Indians, *def.*109  
 historic place, *def.*17  
 Hitler, Adolf, 312, **p**313, 313, 467  
 Hobson, Richmond Pearson, **p**267, 267  
 Holocaust, *def.*313  
 Holy Ground Battlefield, 18  
 Holy Ground, Battle of, 123, **p**123  
 Honda, 404  
 Hood, James, 345  
 Hopkins, Julie Opie, **p**217, 217  
 Horseshoe Bend, Battle of, 106, **m**124, **p**124, 124-126  
 Horseshoe Bend National Military Park, 18, **p**106  
 Housatonic, USS, 209

House of Representatives state, 425-426  
 U.S., 422  
 Houston, George, 226, 232, 264  
 Houston, Sam, 125  
*Houston*, USS, 294  
 Howard College  
 See Samford University.  
 Hubble Space Telescope (1990), 374  
 Hughes, Gabriel, 250  
 Hughes, Joseph, 250  
*Hunley*, CSS, 209  
 Hunley, Horace L., 209  
 Hunt, John, 168  
 Hunt's Spring, **f**145, **p**168, 168  
 Huntsville, 10, **f**14, 22, 23, 25, 31, **f**33, 56, **f**59, 137, 168-170, 210, 233, 244, 270, **f**276, 317, 319, 370, 372-373, 378, 396, 398, 404  
*Huntsville Advocate*, 180  
 Huntsville Normal and Industrial School.  
 See Alabama State University.  
 Huntsville Road, **m**41, 136-137, 166  
 hurricane, *def.*63, **m**64, 87.  
 See also specific names.  
 Hurricane Camille, **m**64  
 Hurricane Danny, 64  
 Hurricane Georges, 353  
 Hurricane Katrina, **m**64, 353  
 Hussein, Saddam  
 See Operation Iraqi Freedom.  
 hydroelectric, *def.*281  
 Hyundai, **p**403, 404

**I**  
 Iberville, Pierre Le Moyne, Sieur d', **f**79, 90, **p**90, 91  
 Idaho, 302  
 "I Have a Dream" speech, immigrant, *def.*10, 15, 20, 251, 306, 359  
 immunity, *def.*80  
 impurities, *def.*251  
 inaugurate, *def.*201, 130, 202  
*Indian Chief*, CSS, 209  
 Indian Removal, 126, **m**189  
 Indian Removal Act, 187  
 Indians  
 See Native Americans.  
 Indian Territory, 114, 187, 189  
 industry, *def.*7, 26, 181-183, 248  
 Ingalls Iron Works, 319-320  
 Inland Steel Works, 319  
 integration, *def.*331, 337-338, 345-347, 352  
 Interior Plateau region, **m**41, 48, **p**48-49, 55  
 Internet, 407-408  
 interpreter, *def.*83  
 Intracoastal Waterway, 397  
 Iraq, 362-365, 368-369  
 Iraq War  
 See also Iraq, Operation Iraqi Freedom.  
 iron, 402-403  
 ironclads, 207, 214  
 Irvington, **f**33  
 Ishkooda, 251  
 Islam, 366  
 Italy, 312, 314, 322  
 Iwo Jima, 315

**J**

Jackson, Andrew, **p**100, 101, 122-126, 133, 187, 189  
 Jackson, Bo, **p**466, 466  
 Jackson County, 393  
 Jacksonian Democracy, 125  
 Jackson, Jesse, 351  
 Jackson, Jimmie Lee, 349  
 Jacksonville Female Academy.  
   *See* Jacksonville State University.  
 Jacksonville Male Academy.  
   *See* Jacksonville State University.  
 Jacksonville Normal School.  
   *See* Jacksonville State University.  
 Jacksonville State University, 261  
 Jacobs, Pattie Ruffner, **p**302, 302, **p**446, 446  
 James, Daniel “Chappie,” 317  
 Jamestown, Virginia, 152  
 Japan, 312-316, 321-322, 325, 362  
 Jasper, **f**14, 449  
 Javelin (missile), 370, 403  
 Jefferson Baptist Church, **p**377  
 Jefferson County, **f**145, 182, 184, 206, 341, 400, **p**420  
 Jefferson, Thomas, 102, 114  
 Jemison, Robert, 198, **p**199  
 Jewish people and religion, 185, 261, 313  
 Jim Boy (Tustenaggee Emathla), **p**116, 116  
 Jim Crow laws, *def.*265, 335

jobs, 410-411  
 Joe Cain Day, 15  
 Joe Wheeler State Park, 266  
 John Deere Factory, 206  
 John F. Kennedy Profile in Courage Award, 423  
 John Looney House, **p**145  
 Johnson, Andrew, 224-226, **p**225  
 Johnson, Frank M. Jr., 331, 349,  
 Johnson, Lyndon B., 278, 349  
 Jones, Douglas, 346  
 Jones, Thomas, 264  
 Jones Valley, 249-250  
 journal, *def.*81  
 judicial branch  
   state, 169, 426-427, **f**427  
   U.S., *def.*103, 422  
 Julian, Percy, **p**457, 457  
 Jupiter C (rocket), 372  
 jury, *def.*426

**K**

Kahl Montgomery Synagogue, 185  
 Kazoola.  
   *See* Lewis, Cudjoe  
 keelboat, 177, *def.*178, **p**178, **p**179  
 Keller, Helen, 278, **p**279, 428  
   *Story of My Life, The*, 278  
 Kelly Ingram Park, 24, 330, 347  
 Kennedy, John F., 344  
 Kennedy, Robert, 344  
 Kiddieland, 341  
 Kilby, Thomas, 285, 299, **p**302, 302, 304, 446, **p**447  
 Kincaid, Bernard, 253

King, Dr. Martin Luther, Jr., 24, 265, **p**330-331, 338, 340, 342, **p**344, 344, 346, 348, 351  
 King, Horace, 159, 174  
 King, William Rufus, 170, **p**175, 175  
 Kiowa Warrior (helicopter), 370  
 Kirkwood, **p**149  
 Kitty Hawk, North Carolina, 286  
*Kitty Hawk*, USS, 371  
 Klansman  
   *See* Ku Klux Klan.  
 Kodak, 282  
 Kolb, Reuben, **p**264, 264  
 Korea, 325-326  
 Korean Conflict, **p**325, 325  
 Korean War  
   *See* Korean Conflict.  
 Ku Klux Klan, 231-232, **p**232, 337, 350, 451, 464  
 Kuwait, 363-365

**L**

labor force, *def.*399  
 LaFayette, 467  
 Lafayette, Marquis de, **f**33, 171, **p**172, 172,  
 Lafitte, Jean, 101  
 Lake Champlain, 100  
 Lake Tensaw, 144  
 Laminack Vineyards, 390  
 land grants, 243-244  
 Landmark Park, 26  
 land regions, **m**40, **m**41, 41  
 Lanett, **f**33  
 Lanier, Sidney, **p**262, 262  
 largemouth bass, **p**438, 438  
 latitude, 99

Lauderdale County, 215, 393  
 Lawrence County, 468  
 Lee County, **f**21, 44, 136  
 Lee County Courthouse, 159  
 Leeds, 12, **f**33, 46, 465  
 Lee, Harper, **p**468, 468  
 Lee, Helen Shores, **p**341, 341  
   See *An Alabama Scrapbook: 32 Alabamians Remember Growing Up*.  
 Lee, Robert E., 205, **p**217  
 legislative branch,  
   state, 169, 425-426  
   U.S., *def.*103, 421-422  
 legislature, state  
   lawmaking process, 425  
   powers, 425  
   sessions, 426  
 Le Vert, Octavia Walton,  
   **p**469, 469  
 Lewis, Cudjoe, 153  
 Lewis, John, 342-343, 348  
 Liberty Bonds, **p**294, 294  
 Library Services Act, 423  
 lieutenant governor, 424  
 lightning, *def.*61  
 Lillian Swamp, 56  
 limestone, **p**399, 401  
 Lincoln, 404  
 Lincoln, Abraham, 193, 198,  
   **p**205, 205, 210, **p**224, 224-  
   225, 238, 322  
 Lincoln Memorial, 205  
 Linden, 342  
 Listerhill, 320  
 Lit, Imogene Speegle, 321  
 Little Cahaba River, 46  
 Little, Malcom  
   See Malcom X.  
 Little River Canyon, 27, **p**49,  
   **p**55

Little Tallassee, 97  
 Liuzzo, Viola, 350  
 Live Oak Cemetery, 175  
 livestock, *def.*12, 55  
 Livingston, 11, **f**21, **f**65, 435  
 Livingston College  
   See University of West  
   Alabama.  
 Lockheed Martin, 370, 403  
 Locust Dell Academy, 150  
 Lookout Mountain, 55  
 Lorraine Motel, 351  
 Louis, Joe, **p**467, 467  
 Louis XIV, (French king), 90  
 Louisiana, 57, 200, 265  
 Louisville and Nashville  
   Railroad, 257  
 Lowndesboro, 18  
 Lowndes County, 123, 350  
 Lowndes County Interpretive  
   Center, **p**350  
 Lowndesboro CME Church,  
   171  
 Lucy, Autherine J., 337, **p**338  
 lumber industry, 254-255,  
   **p**255. See also Timber  
   Belt.  
 Luna, Don Tristán de  
   See de Luna, Don Tristán.  
 Lunar Roving Vehicle, **p**374,  
   374  
 Lusitania, **p**290, 290-291

## **M**

MacArthur, Douglas, 292  
 Macon County, **p**429  
 Madison, **f**65, 169  
 Madison County, **f**145, 153,  
   170, 184  
 Madison, James, **p**100, 100,  
   103

Magellan, **f**79  
 Magic City, The  
   See Birmingham.  
 Maine, USS, 266  
 maintenance, *def.*327  
 Malcolm X, **p**347, 347  
 Malden, West Virginia, 246  
 Malone, Vivian, **p**345, 345  
 Manchuria.  
   See China.  
 manufacturing, 401-404  
 marble, 45, 401  
 Marchand, Sehay, 97  
 Mardi Gras, 15, 94  
 Marengo County, 88, **f**145,  
   153  
 Marion, 173, 261, 349, 402  
 Marion County, 63, 393  
 Market Street, Montgomery,  
   201  
 Marshall, George C., 374  
 Marshall, Thurgood, 337,  
   **p**338  
 Marion Military Institute, 260  
 maritime, *def.*436  
 Marshall Space Flight Center,  
   **p**372, 372-374, 458  
 Marvel City, The  
   See Bessemer.  
 MASH units, 326  
 Massacre Island, 90  
 mass communication,  
   *def.*407  
 Maubila, battle at, **p**85, 86  
 Maxwell Field, 286, 293, 316  
 Maxwell-Gunter Air Force  
   Base, 316, 326, 412  
 Mays, Willie, **p**467, 467  
 McCalla, 26  
 McCallum, Heather Whites-  
   tone, 469

<p>McGillivray, Alexander, 97-98, 119</p> <p>McGillivray, Lachlan, 97, 144</p> <p>McGirth, Vacey, 120</p> <p>McGirth, Zachariah, 121</p> <p>McIntosh, William, <b>p</b>116, 116, <b>p</b>188, 188</p> <p>McKee, John, 122</p> <p>McManus, Sarah Jane Jones (Mrs. Horace King), 159</p> <p>McMurtrey, Charles III, 364</p> <p>McNair, Denise, 346</p> <p>McQueen, Peter, 116, 118</p> <p>McWane, James, 287</p> <p>McWhorter, Diane, 347</p> <p>Meade, George, 205</p> <p>Meaher, Timothy, 154</p> <p>Medal of Honor, 315-316</p> <p>medical research, 406</p> <p><i>Memories of Old Cahaba</i> (Fry), 171</p> <p>Memphis, Tennessee, 351</p> <p>Menawa (Chief), 116, 124-125, <b>p</b>125</p> <p>Mentone, 58</p> <p>Mercedes-Benz plant, <b>p</b>384-385, 404</p> <p>Mercury-Redstone (space program), 374</p> <p><i>Merrimac</i>, USS, 267</p> <p>meteor shower, <b>p</b>117, 117</p> <p>Methodist, 185, 244. <i>See also</i> specific churches.</p> <p>Methodist Episcopal Church South, 217</p> <p>Mexico, 80, 82, 87</p> <p>Micco, Yoholo, <b>p</b>110</p> <p>Midway, 266</p> <p>Midway, Battle of, 323</p> <p>Mighty Wurlitzer, 303</p> <p>migration, <i>def.</i>125, 126, 133,</p>	<p>359</p> <p>Miles College, 338</p> <p>militia, <i>def.</i>122</p> <p>mill, <b>f</b>145, <i>def.</i>158, 183-184, 193, 294, 402</p> <p>Millport, 402</p> <p>mill villages, <b>p</b>253, 253</p> <p>mineral, <i>def.</i>46, 50-51, <b>m</b>51</p> <p>mineral and energy resources, 46, <b>m</b>51</p> <p>Mineral Belt, <b>m</b>182, 250</p> <p>mining, 251-252, 399-400</p> <p>missiles, 370, 403</p> <p><i>See also</i> specific missiles.</p> <p>missionary, <i>def.</i>112, 127, 227</p> <p>Mississippi, 54, 57, <b>m</b>166, 187, 200</p> <p>Mississippian Indians, 88-89</p> <p>Mississippi River, 82, 86, 90, 101, 126, 187</p> <p>Mississippi Territory, 139, 163, 166</p> <p>Mobile, 9, <b>f</b>14, 15, 20, 24, 26, <b>f</b>59, 75, 91-92, <b>m</b>94, 94-96, 108, 120, 148, 152, 158, 172-173, 178, 185-186, 189, 206, 208-209, 217, 233, 263, 267, 272, <b>f</b>276, 285, 292, 294, 304, 316, 318-320, 323, <b>p</b>356-357, 363, 396, 398, 402, 404</p> <p>Mobile, Battle of, 25, 214</p> <p>Mobile Bay, 26, 56, 68, 80-81, 86, 99, 152, 207-208, 214, 294</p> <p>Mobile County, 88, 99, <b>p</b>356, 400</p> <p>Mobile, Port of</p> <p><i>See</i> Port of Mobile.</p> <p>Mobile River, <b>f</b>53, 81, 91, 112</p> <p>Mobile-Tensaw Delta, 56</p>	<p>Model City, The</p> <p><i>See</i> Anniston.</p> <p>Moderates (Republicans), 225</p> <p>M1 Abrams Tank, 327, 370</p> <p>Monroe County, 119</p> <p>Monroe, James, 163, 168</p> <p>Monroeville, 26, 468</p> <p>Monte Sano State Park, 31</p> <p>Montevallo, 25, 26, 216, 456</p> <p>Montgomery, 8, 10, <b>f</b>14, 23, 24, <b>f</b>33, 156, 172-174, 178, 181, 183, 193, 200-201, 207, 216, 233, 254, 256-257, 261, <b>f</b>276, 285-286, 293, <b>p</b>295, 302, 304, 331, 339-340, 343, 349, <b>p</b>358-359, 364, 378, 398, 403, 450</p> <p>Montgomery Ballet, <b>p</b>377</p> <p>Montgomery Bus Boycott, 338-340, <b>p</b>339</p> <p>Montgomery County, 153</p> <p>Montgomery Improvement Association (MIA), 338</p> <p>Montgomery Railroad, 180</p> <p>Montgomery Zoo, <b>p</b>379</p> <p>Moore, Albert, 277</p> <p>Moore, Andrew B., <b>p</b>198, 198,</p> <p>Moore, Harold G., <b>p</b>414, 414</p> <p>Moorer, Thomas H., <b>p</b>414, 414</p> <p>Mooresville, 22, 225</p> <p>Morange, John S., 250</p> <p>Moretti, Giuseppe, 287</p> <p>Morgan, John Tyler, 452</p> <p>Morrill Act of 1862, 243</p> <p>Morrill Act of 1890, 244</p> <p>mosquitoes, 406</p> <p>motto, <i>def.</i>435</p>
--	---	--

Moulton, 9, f33  
 Moundville, 10, 11, p88, 88-89  
 Mount Cheaha, 36, 44, p45, 309  
 Mount Willing, f65, 414  
 Movable School, 245  
 MOWA Choctaw Cultural Center, 18, 127  
 Mt. Vernon, 91, 114  
 multimodal, *def.*396  
 Multiple Launch Rocket System, p369  
 Munford, f33  
 municipal, *def.*430  
 Murphy, Edgar Gardner, 254, 302  
 Muscle Shoals, f14, 293, 319, 398, p432  
 Muscogee Indians, 110. *See also* Creek Indians.  
 Museum of Mobile, 378  
 Muslim, *def.*366  
 Mussolini, Benito, p312

## N

Nagasaki, Japan, 322  
 Napier Field, 317  
 Napoleon (French emperor), 147  
 NASA, 373-374  
 NASCAR, 33  
 Nashville, Battle of, 204  
 Nashville, Tennessee, 125, 136, 231, 341  
 Natchez, Mississippi, 136, 163  
 Natchez Trace, 30, p136, 136-137  
 National Aeronautics and Space Administration

*See* NASA.  
 National American Woman Suffrage Association, 302  
 National Association for the Advancement of Colored People (NAACP), *def.*335, 336, 338  
 National Defense Education Act (NDEA), 423  
 National Education Association, 335  
 National Freedman's Savings and Trust Company, p224  
 National Guard and Reserves, 366, p413, 413. *See also* Alabama National Guard.  
 National Historic Landmark, 335  
 National Historic Site, 17, 25  
 national monument, 18  
 National Register of Historic Places, 19, 23  
 National Statuary Hall, 278  
 National Voting Rights Museum, 350  
 Nation of Islam, 347  
 Native Americans  
   clans, 81  
   contact with Europeans, 75, 80, 87, 113  
   culture, 10, 18, p69, 80, 110, 126, 133  
   disease, 80, 86, 89  
   education, 247  
   games, 113  
   government systems, 107  
   history, 107  
   hunting, 110-111  
   modern era, 127, f352, 455  
   mounds, 88-89

place names, 189  
 religion, 81, 107, 126, 185  
 rights, 126-127  
 shelter, p17, p111, p112  
 slavery, 86, 91, 120  
 tools, 72-74  
 trade, 110, 114  
 women's roles, 111  
*See also* specific Tribes.  
 Natural Bridge, p27  
 natural environment, *def.*37, 52, 380  
 natural gas, 400-401  
 natural hazards, *def.*60  
 natural resources, *def.*37, 45, 50, 380, 453  
 natural vegetation, *def.*66  
 naval stores, 133  
 navigable, *def.*135  
 navigator, *def.*316  
 Navy Cross, 315, 323  
 Nazis, *def.*313  
 Neatherly, T. L., 117  
 Negro Normal School  
   *See* Tuskegee University.  
 New Deal, 298, *def.*308, 308-311, 321. *See also* specific programs.  
 New Market, f65  
 New Orleans (Louisiana), 94, 100-101, 114, 121, 136, 148, 158  
   Battle of, p100, 101, 122, 125  
 Newsome, Ozzie, 467  
 newspapers  
   antebellum, 166, 171-173  
   in modern times, 320, 350, 378, 407  
 New York, 98, 100, 239, 365  
 New York City

<p>See New York.</p> <p>Niagara Movement, 334-335</p> <p>Nichols, William, 173</p> <p>9/11, <i>def.</i>365, <b>p</b>365, 365-366</p> <p>19th Alabama Infantry, 204</p> <p>1904 World's Fair, 287</p> <p>99th Pursuit Squadron, 317</p> <p>Nixon, E. D., 338, <b>p</b>339</p> <p>Nobel Peace Prize, 346</p> <p>Noble, Samuel, 251</p> <p>nonviolent, <i>def.</i>340, 342, 348</p> <p>normal school, <i>def.</i>244</p> <p>North Korea, 325-326</p> <p>Northport, 7</p> <p>North Vietnam, 362</p> <p>Notasulga, 189</p> <p>Nunn, Annetta, 353</p> <p><b>O</b></p> <p>oath, <i>def.</i>169, 202</p> <p>Obama, Barack H., 353</p> <p>oil, 400-401</p> <p>Oklahoma, 126</p> <p>Old Alabama Town, <b>p</b>181, 186</p> <p>Old Catholic Cemetery, 215</p> <p>Old Courthouse Museum, 26</p> <p>Old Federal Road</p> <p>See Federal Road.</p> <p>“Old Hickory”</p> <p>See Jackson, Andrew.</p> <p>Old Landmark Baptist Church, 154</p> <p>Old St. Stephens Historical Park, 167</p> <p>O’Neal, 320</p> <p>Oneonta, <b>f</b>21</p> <p>167th U.S. Infantry, 292</p> <p>Opelika, <b>f</b>21, 183, 213, 320</p> <p>Operation Desert Shield, 364</p> <p>Operation Desert Storm, 364-</p>	<p>365, 368</p> <p>Operation Enduring Freedom, 367</p> <p>Operation Iraqi Freedom, <b>p</b>368, 368-369</p> <p>Opp, 11, <b>f</b>33</p> <p>Orange Beach, 30</p> <p>Ordinance of Secession, 198, 224</p> <p>orphan, <i>def.</i>120</p> <p>Osama bin Laden, 367</p> <p>Ottoman Empire, 290</p> <p>overcropping, <i>def.</i>288, 380</p> <p>Owens, Jesse, <b>p</b>468, 468</p> <p>Oxford, <b>f</b>21</p> <p>Ozark, 370</p> <p><b>P</b></p> <p>Pacific Ocean, <b>m</b>84, 313, 315-316, 321</p> <p>Pakistan, 367</p> <p>Panama Canal, 267, 292</p> <p>pandemic, <i>def.</i>294</p> <p>paper mills, <b>p</b>402, 402</p> <p>paraplegic, <i>def.</i>447</p> <p>Parks, Rosa, 338, <b>p</b>339</p> <p>Parsons, Lewis, 203, 226</p> <p>patent, <i>def.</i>280</p> <p>Patriot missile, <i>def.</i>364, <b>p</b>364</p> <p>Patton, Robert, 203, 226</p> <p>Payne, Uncle Dick, 202</p> <p>peanuts, 389</p> <p>Pea River, <b>f</b>53</p> <p>Pearl Harbor Day, 314</p> <p>Pearl Harbor, Hawaii, 313, <b>p</b>314, 362</p> <p><i>Pélican</i>, 92</p> <p>Pennsylvania, 137, 170, 365</p> <p>Pensacola, 87, 118</p> <p>Pentagon, 365</p> <p>People Against a Littered</p>	<p>State (PALS)</p> <p>See Alabama Department of Transportation</p> <p>Perdido River, 54</p> <p>Perine house, 171</p> <p>Perkins School for the Blind, 278</p> <p>permanent, <i>def.</i>87, 91</p> <p>Persian Gulf, 363, 365, 371</p> <p>Persian Gulf War, 364-365</p> <p>persuade, <i>def.</i>115</p> <p>Pettiford, William R., 454</p> <p>Phenix City, <b>f</b>33, 159</p> <p>Philadelphia, Pennsylvania</p> <p>See Pennsylvania.</p> <p>Philippines, The, 266, 370</p> <p>Pickens, Israel, 170-171</p> <p>Pickensville, 26</p> <p>Piedmont region, <b>m</b>41, 44-45</p> <p>Pierce, John, 144</p> <p>Pierce, William, 144</p> <p>Pike County, 284, 393</p> <p>Pineda, Alonso Álvarez de, <b>f</b>79, 81</p> <p>Pinson, 9</p> <p>pioneer, <i>def.</i>39, <b>m</b>115, 115, 136-137, 139</p> <p>planetarium, <i>def.</i>26</p> <p>plantation, <i>def.</i>148, 149-151, 158, 170, 172, 186, 196</p> <p>planters, <i>def.</i>148, 149-151, 156, 164, 186, 200</p> <p>Plateau, 154</p> <p>Pleasant Hill, 144</p> <p>Pledge of Allegiance, 439</p> <p><i>Plessy v. Ferguson</i> decision, 265, 334</p> <p>Poarch Creek Indians, 126-127, 188</p> <p>Point Mallard Park, 28</p> <p>Poland, 312</p>
--	---	--

political party, *def.*225  
politics, 231, 264, 446, **p**448  
poll tax, *def.*276  
pollution, 57  
Ponce de Leon, Juan, **f**79  
Pope, Matilda (Mrs. John W. Walker), 139  
population  
African American, 233, 276, 289, 322, **f**336, 359  
of Alabama, **f**233, 233, 359-360, 385  
of Alabama Territory, 167-168  
cities, 258, 276, **f**415  
differences, North and South, 195-196  
free blacks, **f**233  
Native American, 133  
slave, **f**157, **f**233  
urban vs. rural, 196, 360  
white, 133, **f**233  
populism, 264  
Populist (People's) Party, 264  
Port Dauphine, 92, 94  
Portier, Michael, 186  
Port of Mobile, 207, 255, 257, **p**396-397, 397-398  
posthumous, *def.*316  
Poughkeepsie, New York, 197  
poultry, *def.*389, **p**389, 389-391  
POW  
See prisoner of war.  
Powell, James, 250  
Pratt City, **p**63  
Pratt, Daniel, **p**184, 184-185, 206  
Prattville, 23, **f**145, 184, 206, 294  
precipitation, 58, **f**59, *def.*60,

**f**65  
Predator (missile), 370, 403  
prejudice, *def.*336  
Presbyterians, 185  
president  
See U.S. president.  
Presidential Medal of Freedom, 278, 349  
primary source, 300  
prisoner of war (POW), *def.*320, 362, 363  
Pritchard, **f**33  
procession, *def.*201  
Proclamation Line of 1763, 96, **m**97  
profession, *def.*455  
prosecutor, *def.*451  
prosperity, *def.*299  
Protestant, 261  
provost, *def.*447  
Public Works Administration (PWA), 308  
Puerto Rico, 266  
Pulitzer Prize, 347  
Pushmataha, 112, 115-116, **p**122, 122-123

## Q

quarries, 45, **p**401, 401

## R

racetracks, **f**33  
Radcliff College, 278  
radical, *def.*225  
Radical Republicans, 225, 228, 231  
radio, 407  
railroads  
early, 180, 183, 211  
in late 1800s, 256, 285  
in modern times, 396-397

Rainbow Division, 42nd, 292  
Randolph County, **p**44  
Rapier, James Thomas, 229, 231  
ratify, *def.*103  
ration, *def.*321  
Ray, James Earl, 351  
rebel, *def.*362  
Reconstruction, *def.*223, 226, 229-231  
Congressional, 225  
end, 232, 264  
Ku Klux Klan, 231-232  
Lincoln plan, 224  
readmission of Alabama to Union, 229  
religion, 261  
Reconstruction Acts, 228, 238  
record, *def.*463, 464  
recreation, 5, 28-29, 31, 375, 380  
recruit, **p**291, *def.*292  
Red Bay, 11  
Red Cross, 294  
Red Eagle (Chief), 119, 123, 125-126  
Red Mountain, 26, 46, 249, 287,  
Redstone Arsenal, 10, 270, 317, 319, 369, 372, **p**373, 412, 451, 458  
Redstone Ordnance Plant, 451  
Reeb, James J. 349  
religion  
in Alabama, 126, 377  
in antebellum era, 181, 185-186  
after Civil War, 261-263  
among slaves, 156

repeal, *def.*224  
Republican Party, 193, 225,  
229, 231-232  
retail, *def.*405  
revenue, *def.*434, 446  
Reynolds plant, 320  
Rice, Condoleezza, **p**353,  
353, **p**447, 447  
Rice, John W. and Angelena  
R., 353  
Richie, Lionel, 464  
Richmond, Virginia, 213  
Rickwood Field, 19  
Ridge and Valley region,  
**m**41, 46, 55  
Rikard's Mill, 16  
Riley, Bob, 452  
RISE School  
*See* University of Alabama.  
Riverdale Mill, Historic, 26  
rivers, **m**29, 29-30, 42-43,  
**m**52, 52, **f**53, 54-57, 68.  
*See also* specific rivers.  
Roaring Twenties, 302  
Robertson, Carole, 346  
Robert Trent Jones Golf Trail,  
**p**32, 32, **p**409  
rockets, 403  
Rogersville, 9  
Roman Catholic.  
*See* Catholic.  
Rome, Georgia, 211-213  
Roosevelt, Eleanor, 278  
Roosevelt, Franklin Delano,  
**p**307, 307-308, 311, 314,  
321, **p**322, **p**324, 336-337  
Roosevelt, Theodore, 266  
Rosa, **f**21  
Rosa Parks Museum, 24, 340  
rotunda, *def.*174  
Round Mountain Furnace,

184, 213  
Rousseau, Lovell H., 213,  
**m**211, **p**213  
Ruffner, 251  
rural, *def.*196, 245, 276, 302,  
360. *See also* population.  
Rural Electrification Adminis-  
tration (REA), 309  
Russell Cave, 17-18  
Russell County, 315  
Russell Mills, 320  
Russellville, 182  
Russia  
*See* Soviet Union.  
Russian Federation  
*See* Soviet Union.  
**S**  
Saffir-Simpson Hurricane  
Scale, **f**34  
Sagadin, Albin, **p**320  
Saint Andrew.  
*See* state flag.  
salt marsh, **p**42, *def.*56,  
Salt Marsh, 208  
Samford University, 370  
Samford, William J., **p**277  
San Esteban, 166  
San Juan Hill, Battle of, 266  
Sanota, 120  
Sansom, Emma, 211-212,  
**p**212  
Santiago Bay, Cuba, 267  
Saturn (rocket), **p**373, 374  
Saudi Arabia, 364  
scalawags, *def.*231  
schools  
*See* education.  
Scottsboro, 9, 10  
Scottsboro High School,  
**p**376

Scud, 364  
seafood, 9, 392  
Seale, 315  
SEALs  
*See* U.S. Navy.  
seasons, 37, 62-63  
secede, *def.*198, 205  
secession, 198-199, 224, 226,  
228, 231  
secession convention, 198  
secretary of state  
state, 424  
U.S., 447  
sectionalism, *def.*193  
segregation, *def.*289, 322,  
336-338, 340, 342, 344,  
352, 454, 467  
Selective Service Act, 292  
Selma, **f**14, 23, 24, 26, **f**65,  
172-173, 175, 178, 183,  
207, 215-216, 230, 233,  
**f**276, 306, 316, 331, 348-  
349, 466, 469  
Selma Navy Yard, 206  
Selma to Montgomery Na-  
tional Historic Trail, 350  
Semmes, 215  
Semmes, Raphael, **p**215  
Senate  
state, 425-426  
U.S., 422  
"separate but equal," 334,  
337  
Serbia, 290  
service industry, *def.*399,  
405-411  
Sessions, Jeff, 452  
settler, *def.*18, 22, 37, 39-40,  
42-46, 48, 50, 54-55, 64,  
75, 77, 83, 92-94, 96-97,  
107, 109-111, 114-115, 118-



119, 121-122, 125-126, 131, 133, 138-139, 141-143, 148, 187  
sharecropper, *def.*242, 243, 288  
Shawnee, 107, 115  
Shelby County, **f**33, 182, 184, 206  
Shelby Iron Works, 184  
Shelby, Richard, 452  
Shepard, Alan, 374  
sheriff, county, 429  
Shores, Arthur, **p**338  
Shorter, 317  
Shuttlesworth, Fred, **p**344, 344  
Sibert, William, **p**292, **p**415, 415  
Silver Comet Trail, 30  
Sipsey River, 56, 189  
site, *def.*17, 18, 22, 24-25, 31  
sit-in, *def.*340, 342  
Sixteenth Street Baptist Church, 24, 330, **p**346, 346  
skirmish, 210  
Skylab, 374, 378  
slave, *def.*86, 142, 195-196, 198  
slave codes, 156  
slave owners, 126, 148, 155  
slavery.  
    *See also* slave, slave codes, slaves.  
slaves,  
    clothes, 155  
    explorers, 152  
    in Civil War, 203, 205  
    customs, 156  
    family life, 156-157  
    food, 155

labor, 148, 151, **p**153, 153, 155, 159  
pioneers and settlers, 40, 120-121, 133, 135, 137, quarters, 155  
religious practices, 156, 186  
songs, 156  
states, 198  
Sloss Furnaces, 26, 249  
Smith, Carolyn C., 22  
Smith, Holland, **p**315, 315  
Smith, James, 121  
Smith, Mark C., 454  
Social Security Act (SSA), *def.*310  
sociobiology, *def.*458  
soil, 43, 46, 50-51, 68, 70-71, 380. *See also* Black Belt.  
Soto, Hernando de  
    *See* de Soto, Hernando.  
South Carolina, 200  
Southeast Air Corps Training Center, 3116  
Southern Christian Leadership Conference (SCLC), 342  
*Southern Living* magazine, 454  
southern longleaf pine, **p**437, 439  
Southern Museum of Flight, Birmingham, 25  
Southern Railway, 257  
South Korea, 326, 362, 370  
South Vietnam, 362  
Soviet Union, 290-291, 313-314, 324-326, 362, 372  
soybeans, 245  
Space Camp for Kids, **p**374, 374

Spacelab, 374  
Space Missile Defense Command, 370  
Spain, 74-75, 77, 79-82, **p**81, **p**86, 86-87, 89, 94, **m**97, 97-99, 101, 107, 118, 146, 152, 185, 266, 436  
Spanish  
    *See* Spain.  
Spanish Alabama, **m**99  
Spanish-American War, 266-267  
Spanish flu, 295  
Spanish Fort, 26  
Spann, Johnny M. "Mike," 368  
Sparkman, John J., **p**451, 451  
Speaker of the House, U.S., 449  
Spears, William W., 204  
speculator, *def.*139, 164  
sports teams, 32-33  
Spring Hill College, 186, **p**352, 352  
Spring Park Bridge, **p**308  
Springville, 7  
Sprott, **p**304  
squatter, *def.*138, 139  
Stalin, Joseph, **p**324  
Stallings Center  
    *See* University of Alabama.  
Stallings, Gene  
    *See* University of Alabama.  
"Stand in the Schoolhouse Door," **p**345, 345  
state coat of arms, **p**436  
State Colored Normal and Industrial School, 244  
state flag, **p**435, 436  
state government,  
    executive branch, 424

judicial branch, 426-427  
legislative branch, 425-426  
State Historic Site, 17, 18  
State Normal College of  
Florence  
See University of North  
Alabama.  
State Normal School and  
University  
See Alabama State  
University.  
State of Surprises, 5  
state-of-the-art, *def.*403  
state parks, 26-27, 31, 44,  
p48, p66, 433  
states' rights, 195-196  
state seal, p436  
Statesville, 173  
state symbols, 435-438  
St. Bernard Abbey, 8  
St. Clair County, 9, 182, 327  
steamboats.  
See transportation.  
steel, 402-403, 404  
Stephens, Alexander, 200-201  
Stephens, E. B., 455  
stickball, p113  
stock, *def.*304  
stock market crash of 1929,  
304  
Stockton, 18  
*Story of My Life, The* (Keller),  
278  
Streight, A. D., m211, 211-  
213, p213  
strip mining, *def.*400  
St. Stephens, m115, 137, 163,  
165-166, 172, 178, 207  
Studdard, Ruben, 464  
Student Nonviolent Coordi-  
nating Committee (SNCC),

343  
suborbital, *def.*374  
subtropical, *def.*58  
suburb, *def.*258  
successor, *def.*224  
suffrage, *def.*302  
Sumter County, f21, 112  
supreme court  
state, 427, 451, 452  
U.S. p422, 422  
surface water, *def.*52, m52,  
54  
surrender, *def.*202  
survey, 78, 86, *def.*99, 117,  
139  
swamp, *def.*50, 54, 56, 101,  
187  
Swayne, Wager, p228  
symbol, *def.*347  
symbols, state, 435-438  
synagogue, *def.*185. *See also*  
specific synagogues.  
synthetic, *def.*404  
Syria, 364

## T

Tah-chee, p111  
Tait, 144  
Taliban, 367  
Talladega, 22, f33, 189, 227,  
f276, 278, 283  
College, 451  
County, f21, 206, 213, 327,  
404  
Forest, 30, 44  
Mountains, p36  
national forest, 20  
Talladega Superspeedway,  
f33  
Tallapoosa River, f53, 93, 110,  
124, 381  
Tallassee, 159, 206, 293  
Tallasseehatchee, f145  
Tallasseehatchee Creek, 123  
Tannehill Furnace, 184  
Tannehill Ironworks Histori-  
cal State Park, 26, p182  
tax, *def.*98, 196, 434  
Taylor, Wilford (Chief), 127  
TCI, 320  
technology, *def.*70, 280-282,  
303, 357, 372, 408-409  
Tecumseh (Chief), 107, 115-  
118  
telephones, 407-408  
television, 2, 349, 364, 407,  
464-465  
temperature, *def.*58, m59,  
f65  
tenant farmer, *def.*242, 288  
*Tennessee*, CSS, p206, 206,  
214  
Tennessee River, f53, 54, 56,  
83, 158, 180, 183, 281,  
293, 309  
Tennessee River Valley, 111,  
151, 153, 183, 231, 310  
Tennessee-Tombigbee Water-  
way, 286, 397, 450  
Tennessee Valley, 210  
Tennessee Valley Authority  
(TVA), 298, 308-310, 318,  
406  
Tensaw, 126, 188, 380  
Tenn-Tom  
See Tennessee-Tombigbee  
Waterway.  
terrorist, *def.*365  
Texas, 200  
textile, *def.*26, 158, 183, 252-  
254, p254, 320  
theme, *def.*7

therapy, *def.*406  
Thomas, Frances Gould  
(Mrs. Horace King), 159  
Thornton, Kathryn, p459, 459  
332nd Fighter Group.  
See 99th Pursuit Squadron.  
ThyssenKrupp Steel and  
Stainless USA, 404  
timber, 255, 285, 320  
See also forestry.  
Timber Belt, **m**255, 255  
Tinian Island, 321  
tobacco, 75, 142, 151  
Tohopeke (Creek village), 124  
*To Kill a Mockingbird*, 468  
Tokyo Bay, Japan, 316  
Tom Bevill Visitor Center, 26  
Tombigbee River, **f**53, **p**54,  
56, 147, 153, 165, 178, 189  
Topeka Board of Education,  
337  
tornado, 60, *def.*61, 62  
season, 62  
scale, **f**62  
2011 Tornado, 62, **p**63  
Toulmin, Harry, 133  
tourism, 29, 409  
towns, 44, 55, **p**71, 71, **f**145,  
154, 157, 184, 186, 193,  
240, 250-252, 280, 283,  
285, 302  
Toyota Motor Manufacturing,  
404  
Trail of Tears, 126, 131,  
188-189. See also Indian  
Removal.  
transportation, 394-398, 403  
air, 398  
early roads, 256, 283, 285,  
304  
flatboats, 177

highways, 308, 373,395-  
396, 449  
keelboats, 178  
See railroads.  
riverboats, 285. See also  
steamboats.  
road improvements, 446  
steamboats, 18, 152, 171-  
172, 177-180, 216, 256  
streetcars, 257-258  
water, 309, 397-398  
treasurer, state, 424  
Treaty of Dancing Rabbit  
Creek, 187  
Treaty of Fort Jackson, 107,  
125, 133  
Treaty of Indian Springs, 188  
Treaty of New Echota, 188  
Treaty of Paris (of 1783), 99  
trial, *def.*426  
tributary, *def.*397  
Trimble, 321  
Troy, **f**65, 370, 403  
Troy State University, 340  
truce, *def.*326  
Truman, Harry S., 322, 336  
Turkey, 370  
Turner, Benjamin Sterling,  
229, **p**230  
Tuscaloosa, **f**14, 22, 32, 63,  
137, 169, 172-174, 198,  
206, 215-216, **f**276, 331,  
397, 398, 402  
Tuscaloosa County, 63, 182,  
400  
Tuscumbia, 10, **f**33, 183, 189,  
278, 309, **p**428  
Tuscumbia Railroad, 180  
Tuskaloosa, Chief, 84-86, 172  
Tuskegee, 25, 259, 352, **p**429,  
464

Tuskegee Airmen, 25, 317  
Tuskegee Airmen Museum,  
25  
Tuskegee AME Zion Church,  
247  
Tuskegee Institute, 247, 317,  
335  
Tuskegee University, 244-246  
Tutwiler, Julia, 435, 443,  
**p**456, 456-457, 469  
TVA  
See Tennessee Valley  
Authority.  
21st Alabama Infantry  
Regiment, 209  
Twenty-seven Mile Bluff, 91  
Twickenham, 22, **p**23  
Tyler, Daniel, 251  
Tyler, John, 175

**U**  
unemployment, *def.*306  
Union, 170, 198, 202, 205  
unionist, *def.*202, 205, 231  
Union states, **m**200  
United Nations, 326, 364  
United States Capitol, 278,  
339, **p**421  
United States Constitution,  
*def.*103, 196, 226, 228,  
276, 302, 334, 351  
Bill of Rights, 103  
University of Alabama, 150,  
172-173, 215-216, 337-338,  
345, 353, 375, 404. 406,  
423, 458, 465  
University of Montevallo,  
**p**260, 261  
University of North  
Alabama, 150, 261  
University of South

Alabama, 406  
University of West Alabama,  
261, 456  
urban, *def.*196, 360. *See also*  
population.  
U.S. Air Force, 317, 412  
U.S. Army, 18, 101, 187, 228,  
318, 372, 412-413  
U.S. Army Aviation Museum,  
25  
U.S. Army Quartermaster  
Museum, 316  
U.S. Capitol.  
*See* United States Capitol.  
U.S. Coast Guard, 413  
U.S. Congress, 175, 196, 225,  
228-229, 231-232, 238,  
243, 266, 291-292, 421-  
422, 423  
U.S. Constitution  
*See* United States  
Constitution.  
U.S. government, 421-422  
executive branch, 422  
judicial branch, 422  
legislative branch, 421-422  
U.S. House of Representa-  
tives, 163, 170, 229-231,  
267, **p**422, 422, 449  
U.S. Marine Corps, 368  
U.S. Naval Academy, 267,  
323, 371  
U.S. Navy, 363, 367, 371  
U.S. president, 422  
U.S. Senate, 175, 188, 363,  
422, 449-451  
U.S. Space and Rocket  
Center, 25, 270, 374, 378  
U.S. Supreme Court, 187,  
265, 331, 337, 339, **p**422,  
422

## V

Valley, 26  
Valley Head, **f**65  
Vance, **p**384-385, 404  
Van de Graaff, Robert, **p**457,  
457  
vegetables, 389-390  
vehicle, *def.*283  
Veterans Day, 295  
veto, *def.*425  
Viet Cong  
*See* Vietnam War.  
Vietnam, 362  
Vietnam Veterans Memorial,  
340  
Vietnam War, **p**362, 362, 414  
Vina, 423  
Vine and Olive Colony, **p**146,  
147  
von Braun, Werner, **p**372,  
372, 412, 454, **p**458, 458  
voting  
elections, 350, 431  
polls, 431  
registration, 342, 348, 351,  
**f**352, 431  
Voting Rights Act of 1965,  
350-351  
Vulcan, 26, **p**287, 287

## W

Waldo, **f**21  
Walker County, 182, 400  
Walker, John Augustus, **p**311  
Walker, John W., 139, 168-  
170  
Wallace, George, **p**345, 345,  
352, 447-448, **p**448  
Wallace, Lurleen, **p**448, 448  
Wane, Virgil Lamar, 346

War between the States  
*See* Civil War.  
Warm Springs, Georgia, 321  
War of 1812, 100-101, 107,  
115, 125  
War on Terrorism, *def.*365  
Warrior coalfield, 182  
Washington Academy, 166  
Washington, Booker T., 244,  
**p**246, 246-247, **p**265, 265,  
334-335, 461  
Washington County, 18, 88,  
112, 127, 165, 170  
Washington, D. C., 100, 114,  
136, 188, 205, 247, 340,  
422  
Washington, George, **p**98,  
98, 103, 114  
Waterloo, 18, **f**65  
water resources, 51-57  
waterways, *def.*54  
Watson, George, 316  
Wayland Seminary, 247  
weapons of mass destruction  
(WMD), *def.*365, 368  
weather, *def.*37, 58, 63, **f**65  
Weatherford, William, 116,  
126, 144.  
*See also* Red Eagle.  
Weogufka, 9  
Wesley, Cynthia, 346  
West Indies, 207  
Weston, Diane, **p**455, 455  
West Point, Georgia, 180  
wetlands, *def.*52, **p**56-57  
Wetumpka, 18, 43, 97, 117,  
159, 173, 189, 323  
Wetumpka Astrobleme, 117  
Wheeler Dam, **p**310  
Wheeler, Joe, 266  
Wheeler Lake, 266

Wheeler Reservoir, 310  
White Hall, 123, 350  
Whitehill, Catherine “Cat”  
Reddick, 468  
White House, **p**422, 422  
whitewater, *def.*28  
Whitfield, Nathan Bryan,  
148  
Whitney, Eli, 157-158, **p**158  
wholesale, *def.*405  
Williams, Adam Daniel, 265  
Williams, Hosea, 348  
Williams, Marmaduke, 169  
Wills Town, 112  
Wilson, Augusta Evans,  
**p**263, 263  
Wilson Dam, **p**281, 293,  
**p**298  
Wilson, Edward O., 457,  
**p**458  
Wilson, James Harrison,  
215-216

Wilson, Woodrow, 291  
Windham, Kathryn Tucker,  
469  
Winston County, 27, 202  
Winston plantation, 227  
Wiregrass, *def.*26  
Wiregrass Museum of Art,  
27  
Wisdom, John H., **m**211, 212  
Women’s Army Corps  
(WAC), 318  
women’s suffrage, 302, 446  
Woodstock, **f**33, 248  
Woodstock Furnace Com-  
pany, 251  
Works Progress Administra-  
tion (WPA), 309, 311  
World Trade Center, New  
York City, 365, **p**366  
World War I, 290-295, 315,  
415  
World War II, 299, 312-322,

362, 370, 372  
economic effects, 317-321  
Wright Brothers Flying  
School, 316  
Wright, Frank Lloyd, **p**23  
Wright, Orville, 286  
Wright, Wilbur, 286  
Wynette, Tammy, 465  
Wyoming, 302

## **XYZ**

Yancey, William Lowndes,  
198, **p**199  
yellow fever, 92  
yellowhammer, 436-437, **p**437  
Yellowhammer State, the, 435  
yeoman, *def.*139, 142, 146,  
148, 164  
Young, Andrew, 343  
Yufala, **f**145  
Zeitler-Hill-McLain House,  
**p**22

# Acknowledgments

**PICTURE CREDITS:** The following abbreviations are used for sources from which several illustrations were obtained.

ATD	Alabama Tourism Department
ADAH	Alabama Department of Archives and History
BPL	Birmingham Public Library
DOD	Department of Defense
LC	Library of Congress
PD	Public Domain
WSHSCL	W. S. Hoole Special Collections Library, University of Alabama
USA	University of South Alabama Archives

**FRONT MATTER:** Cover all photos Robin McDonald except inset, below right Reggie Lankford. i Robin McDonald. ii-iii Robin McDonald. iv Donette Bower. v Robin McDonald. vi-1 Robin McDonald. **UNIT ONE:** 2-3 LC. **CHAPTER ONE:** 4-5 Robin McDonald. 6 Reggie Lankford. 7 ATD. 8 (both) ATD. 9 (above) ATD; (below) Robin McDonald. 10 (both) Robin McDonald. 11 (above) ATD; (below) Robin McDonald. 12 (both) ATD. 13 W. C. Handy Home, Museum, and Library. 14 (above) Robin McDonald; (below) ATD. 15 LC. 16 (both) Robin McDonald. 17 Robin McDonald. 18 (both) ATD. 19 (above) LC; (below) Robin McDonald. 20 (above) ATD; (center and below) Robin McDonald. 21 (above) ATD; (below) Robin McDonald. 22 (both) Robin McDonald. 23 (top) Robin McDonald; (center left and right) ATD; (below) LC. 24 Robin McDonald. 25 (top) Robin McDonald; (center and below) ATD. 26 (both) Robin McDonald. 27 (above) Reggie Lankford; (below) ATD. 28 (both) ATD. 29 Reggie Lankford. 30 (both) ATD. 31 (both) ATD. 32 (above) ATD; (below) Robin McDonald. 33 (above) Robin McDonald; (below) ATD. **CHAPTER TWO:** 36-37 Robin McDonald. 38 Stockxpert. 39 PD. 42 Reggie Lankford. 42-43 Robin McDonald. 43 Robin McDonald. 44 WC. 44-45 Robin McDonald. 45 Robin McDonald. 46-47 Robin McDonald. 47 Robin McDonald. 48 Robin McDonald. 48-49 Robin McDonald. 49 ATD. 50 WC. 51 Robin McDonald. 54 Robin McDonald. 55 (above) Robin McDonald; (below) WC. 56 Robin McDonald. 57 (both) Robin McDonald. 58 Robin McDonald. 60 (both) Robin McDonald. 61 (above) Robin McDonald; (below) NOAA. 62-63 Robin McDonald. 63 Robin McDonald. 64 NASA. 66 (both) Robin McDonald. 67 (above) Robin McDonald; (below) Reggie Lankford. 68 (both) Robin McDonald. 69 ATD.

70 CC/Lorena Torres Angelini. 71 (both) Robin McDonald. **UNIT TWO:** 74-75 LC. **CHAPTER THREE:** 76-77 Architect of the Capitol. 80 Architect of the Capitol. 81 PD. 82-83 LC. 83 PD. 85 (both) WSHSCL. 86 PD. 87 Dr. John E. Worth. 88 (above) Moundville Archaeological Park; (below) Reggie Lankford. 88-89 Robin McDonald. 90 PD. 91 Museum of the City of Mobile. 92 PD. 93 (both) Robin McDonald. 95 PD. 96 (above) painting by Gerard Peloux, courtesy Fort Condé; (below) ATD. 98 (above) PD; (below) Architect of the Capitol. 99 PD. 100 (both) LC. 101 ADAH. 103 (above) Architect of the Capitol; (below) National Archives. **CHAPTER FOUR:** 106-107 Robin McDonald. 110 McKenney & Hall, *History of the Indian Tribes of North America*. 111 (above) McKenney & Hall, *History of the Indian Tribes of North America*; (below) Tennessee State Museum. 112 (above) Robin McDonald; (below) PD. 113 PD. 114 Robin McDonald. 115 WC. 116 (both) McKenney & Hall, *History of the Indian Tribes of North America*. 117 PD. 118 Horseshoe Bend National Historic Park. 119 ADAH. 120 LC. 121 (above) Robin McDonald; (below and below left) ADAH. 122 (above) McKenney & Hall, *History of the Indian Tribes of North America*; (below) ADAH; (right) LC. 123 (left) Robin McDonald; (right) Center for Archaeological Studies, University of South Alabama. 124 (both) Horseshoe Bend National Historic Park. 125 (above) McKenney & Hall, *History of the Indian Tribes of North America*; (below) Horseshoe Bend National Historic Park. 126 PD. 127 Robin McDonald. **UNIT THREE:** 130-131 Robin McDonald. **CHAPTER FIVE:** 132-133 LC. 134 PD. 136 (above) WC; (below) Robin McDonald. 138 WSHSCL. 139 PD. 140 LC. 141 (above) PD; (below) LC. 142 (above) *Alabama Heritage* magazine; (below) PD. 143 Tennessee State Museum. 144 LC. 145 CC. 146-147 ADAH. 147 ADAH. 148 Robin McDonald. 149 (both) Robin McDonald. 150 WSHSCL. 151 PD. 152 LC. 153 LC. 154 USA. 155 PD. 156 PD. 157 ADAH. 158 (both) LC. 159 Robin McDonald. **CHAPTER SIX:** 162-163 Robin McDonald. 166 LC. 167 (both) Robin McDonald. 168 (top left and above left) ADAH; (below right) Huntsville Public Library. 169 (above) LC; (below) ADAH. 171 (above) from William H. Brantley, Jr., *Three Capitals*; (below) Robin McDonald. 172 (above) ADAH; (below) WSHSCL. 173 (above) Robin McDonald; (below) LC. 174 Robin McDonald. 175 Selma-Dallas County Public Library. 176 LC. 177 (both) PD. 178 Filson Club. 179 (above) LC; (below) Louisiana State University Museum of Art. 180 PD. 181 Robin McDonald. 182

Robin McDonald. 183 Robin McDonald. 184 (above) Robin McDonald; (below) ADAH. 185 (both) LC. 186 Robin McDonald. 187 PD. 188 (above) Georgia State Archives; (below) Woolaroc Museum. **CHAPTER SEVEN:** 192-193 Robin McDonald. 194 (left) Reggie Lankford; (right) Robin McDonald. 196 LC. 197 (both) LC. 198 (above) LC; (below) ADAH. 199 (left) Robin McDonald; (above and below right) ADAH. 201 (left and above right) LC; (below right) Robin McDonald. 202 Robin McDonald. 203 LC. 204 (both) LC. 205 LC. 206 Robin McDonald. 207 U.S. Naval Historical Center. 208 LC. 209 Robin McDonald. 210 LC. 212 (above and below left) ADAH; (right) WSHSCL. 213 (both) LC. 214 (above) LC; (below) Museum of the City of Mobile. 215 (above) Wadsworth Atheneum, Hartford, Connecticut; (below) USA. 216 LC. 217 (above) LC; (below) ADAH. **CHAPTER EIGHT:** 220-221 LC. 224 (top) LC; (below) A. S. Williams III Americana Collection, University of Alabama Libraries. 225 (both) LC. 226 (above) ADAH; (below) Atlanta Historical Society. 227 ADAH. 228 ADAH. 230 (both) LC. 231 LC. 232 W. Stuart Harris. **CHAPTER NINE:** 236-237 LC. 238 LC. 240 PD. 241 LC. 246-247 (both) LC. 242 (above) A. S. Williams III Americana Collection, University of Alabama Libraries; (below) LC. 243 ADAH. 244 (above left and below right) LC; (below left) A. S. Williams III Americana Collection, University of Alabama Libraries. 245 LC. 246 LC. 246-247 LC. 247 Robin McDonald. 248 (above) LC; (below) *Harper's Weekly*. 249 (above) LC; (below) Robin McDonald. 250 PD. 251 ADAH. 252 (above) *Harper's Weekly*; (below) LC. 253 LC. ADAH. 254 LC. 254-255 BPL. 255 ADAH. 256 ADAH. 257 ADAH. 258 LC. 259 LC. 260 (both) Robin McDonald. 261 ADAH. 262 (left) LC; (right) WC. 263 ADAH. 264 ADAH. 265 (both) LC. 266 LC. 267 (above) LC; (below) ADAH. **UNIT III:** 270 -271 LC. **CHAPTER TEN:** 272-273 LC. 274 courtesy *Alabama Heritage* magazine 276 LC. 277 (left) BPL; (right) ADAH. 279 LC. 280 WC. 280-281 LC. 281 A. S. Williams III Americana Collection, University of Alabama Libraries. 282 LC. 283 BPL. 284 (above) ADAH; (below) LC. 285 USA. 286 ADAH 287 LC. 288 BPL. 289 (left) ADAH; (right) LC. 290 LC. 291 (left) BPL; (right) LC. 292 LC. 292-293 LC. 293 (both) LC. 294 (above) USA; (below) LC. 295 ADAH. **CHAPTER ELEVEN:** 298-299 LC. 300 National Archives. 302 (above) WC; (below) BPL. 303 (both) LC. 304 LC. 305 LC. 306 LC. 307 (above) Atlanta Historical Society; (below) LC. 308 LC. 309 (above) Robin McDonald; (below) LC. 310 (both) LC. 311 (above) Alabama Cooperative Extension System; (below) courtesy *Alabama Heritage* magazine. 312 LC. 313 (above) LC; (below) WC. 314-315 LC. 315 (both) LC. 316 Reggie Lankford. 317 LC. 318 (top and bottom) USA; (center) LC. 319 USA. 320 (all) Robin McDonald. 321 courtesy Imogene Speegle Lit. 322 Georgia State Archives. 323 (above) Southern Museum of Flight; (below) US Navy. 324 LC. 325 LC. 326 LC. 327 Donette Bower. **CHAPTER TWELVE:** 330-331 Robin McDonald. 332 CC. 334 LC. 335 (above) Robin McDonald; (below) LC. 336 ADAH 337 LC. 338 (above) ADAH; (below) Georgia State Archives. 339

(both) Montgomery County Archives. 340 Robin McDonald. 341 (background) Robin McDonald; (below) courtesy Helen Shores Lee. 342 WC. 343 (above) Robin McDonald; (below) ADAH. 344 BPL. 345 (above) LC; (below) WSHSCL. 346 *Birmingham News*. 347 WC. 348 LC. 349 LC. 350 (above) LC; (below) Robin McDonald. 351 Robin McDonald. 352 (above) WC; (below) *Birmingham News*. 353 (above) US Department of State; (below) Office of the Surgeon General of the United States. **UNIT V:** 356-357 LC. **CHAPTER THIRTEEN:** 358-359 LC. 362 National Archives. 363 (above) National Archives; (below) WC. 364 (both) DOD. 365 CC. 366 (above) U.S. Navy photo by Chief Photographer's Mate Eric J. Tilford; (below) U.S. Navy Photo by Photographer's Mate 2nd Class Jim Watson. 367 DOD. 368 US Marine Corps photo by Lance Corporal Kevin C. Quihuis Jr. 369 DOD. 370 DOD. 371 US Navy. 372 NASA. 373 (both) LC. 374 (above) NASA; (below) LC. 375 LC. 376 (both) LC. 377 (above) Robin McDonald; (below) LC. 378 LC. 378-379 Robin McDonald. 379 LC. 380 LC. 381 WC. **CHAPTER FOURTEEN:** 384-385 LC. 388 LC. 389 LC. 390 Robin McDonald. 391. Robin McDonald. 392 WC. 393 (both) LC. 394 Robin McDonald. 395 Reggie Lankford. 396-397 LC. 397 LC. 398 WC. 399 LC. 400 (above) LC; (below) Reggie Lankford. 401 LC. 402 (above) LC; (below) Robin McDonald. 403 LC. 405 LC. 406 LC. 408 (above) Stockxpert; (below) US Air Force. 409 (all) ATD. 410 LC. 412 US Army. 413 (both) DOD. 414 (above) WC; (below) DOD. 415 LC. **CHAPTER FIFTEEN:** 418-419 Robin McDonald. 420 Robin McDonald. 421 Architect of the Capitol. 422 (top) White House; (center) Corbis; (below) WC. 423 *Birmingham News*. 424 (above) CC; (below) LC. 425 LC. 426 Robin McDonald. 428 Robin McDonald. 429 Robin McDonald. 430 CC. 431 Stockxpert. 432 LC. 433 LC. 434 Robin McDonald. 435 WC. 436 (both) WC. 437 (above) Harriet Wright; (below left) CC/Melburnian; (below right) CC/Chuck Barger, University of Georgia. 438 Georgia Department of Travel & Tourism. 439 Robin McDonald. **CHAPTER SIXTEEN:** 442-443 LC. 445 ADAH. 446 LC. 447 (above) ADAH; (below) US Department of State. 448 (above) ADAH; (below) WSHSCL. 449 (above and below right) ADAH; (below left) LC. 450 (above) ADAH; (below) LC. 451 (above) LC; (below) courtesy Oscar W. Adams. 452 (above) LC; (below) University of Alabama School of Law. 453 WC. 454 BPL. 455 courtesy Diane Weston. 456 (left) WC; (right) ADAH. 457 (above) WC; (below) WSHSCL. 458 (above) CC/Jim Harrison; (below) NASA. 459 NASA. 460 LC. 461 ADAH 462 LC. 463 (below) LC; (above) US Navy photo by Chief Mass Communication Specialist Michael W. Pendergrass. 464 CBS Television. 465 (above) CC/Jyle Dupuis; (below) CC/Gallery 2 Images. 466 (top) Chris Perry; (below left) US Air Force photo by Senior Airman James C. Dillard; (below right) US Navy photo by Journalist 1st Class Preston Keres. 467 (top left and below) LC; (top right) WC. 468 (above) LC; (below) White House. 469 Historic Mobile Preservation Society. **BACK MATTER:** 481 A. S. Williams III Americana Collection, University of Alabama Libraries.